

Images of RS7 (*Fraxinus-whittling*) residues

used in Blind Test 1

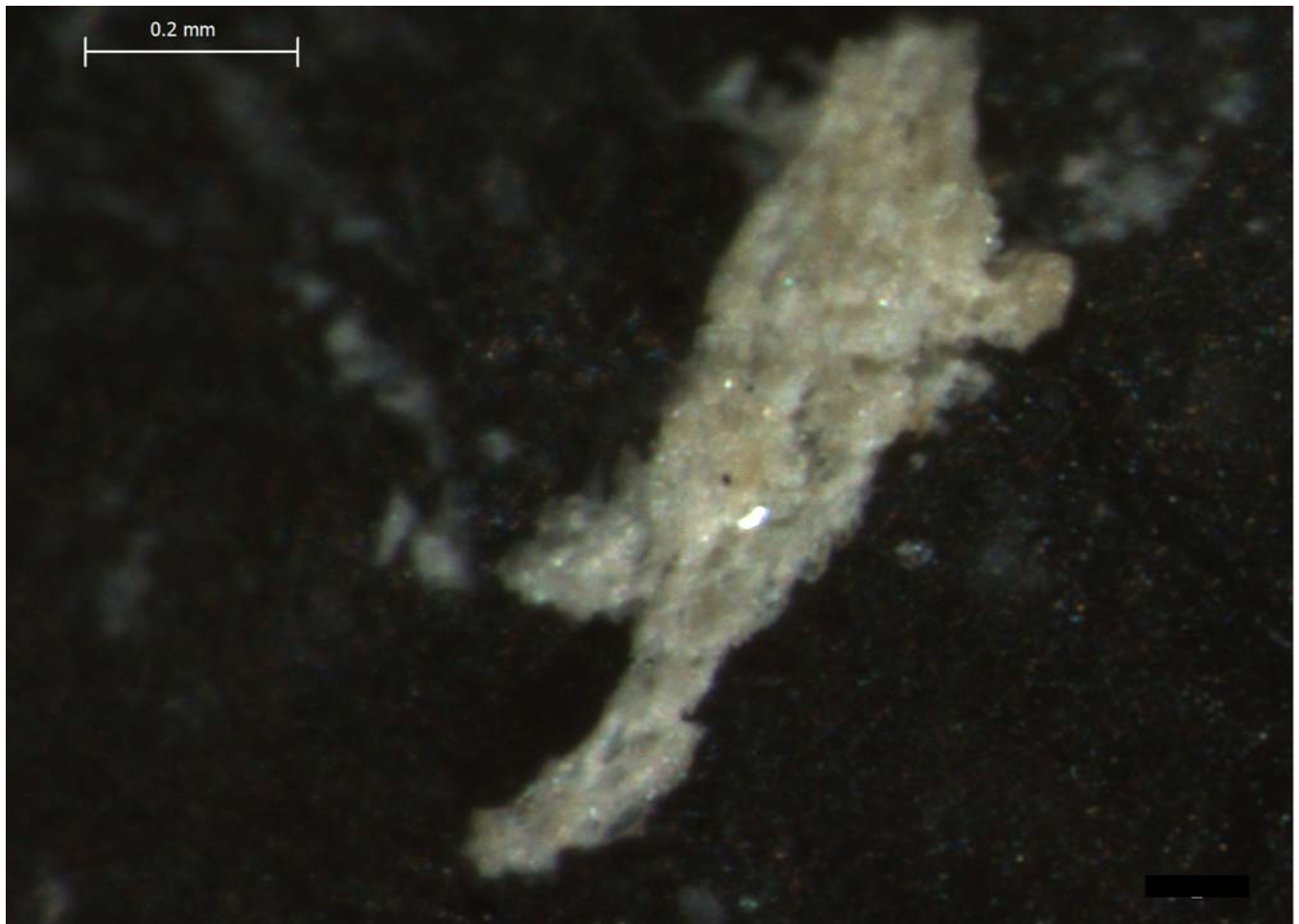
The images published in this pdf are those that were used in the testing portion of the experiment reported in Monnier et al. 2012, *J. Arch. Sci.* For questions, please contact Gilliane Monnier at monni003@umn.edu.

Naming conventions: 'RS' = Residue Study; 'D' = Dorsal side; 'V' = Ventral side; 'a', 'b', etc. = residue number.

For example, "3Db" refers to tool RS3, residue "b" on the dorsal surface.

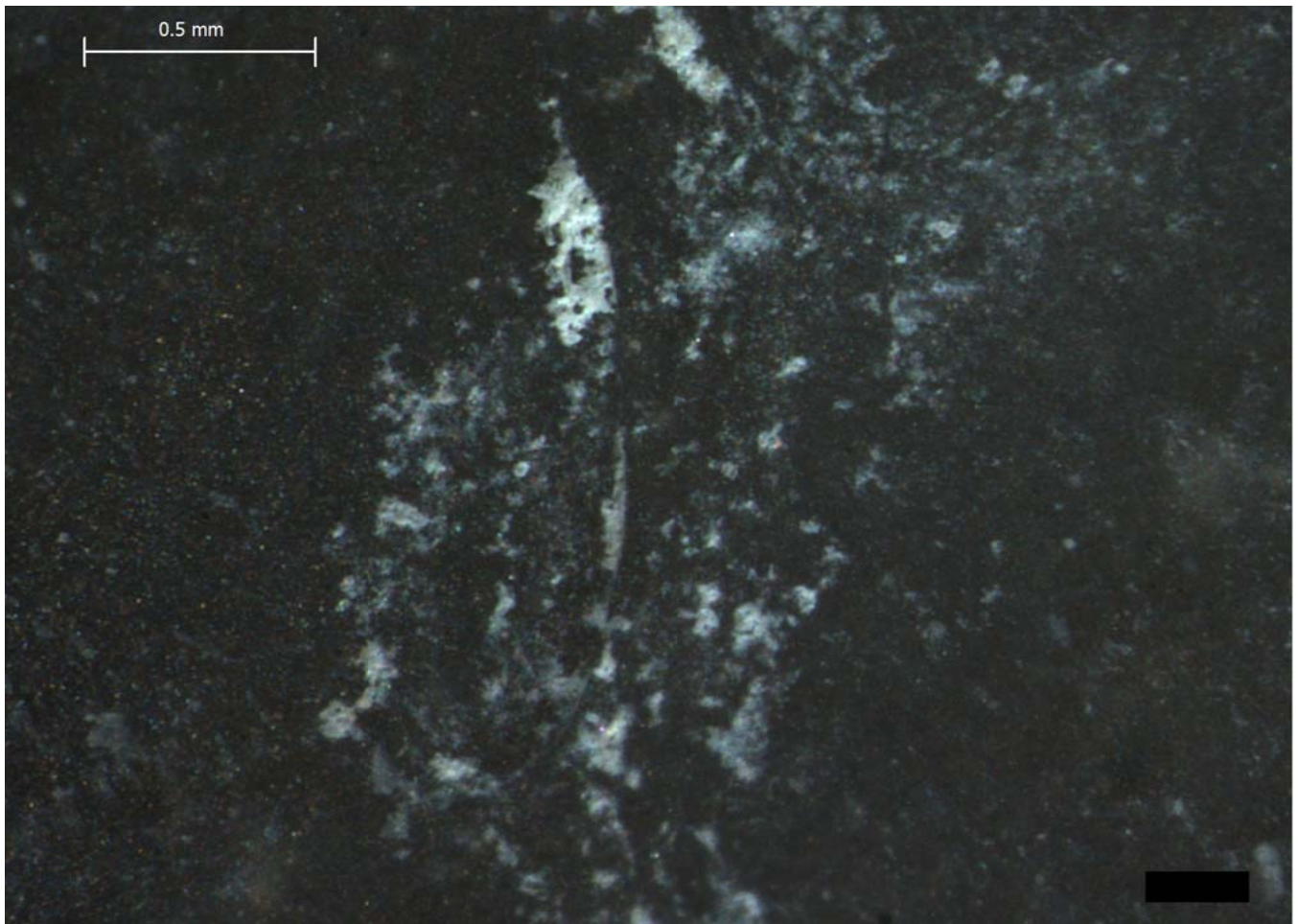
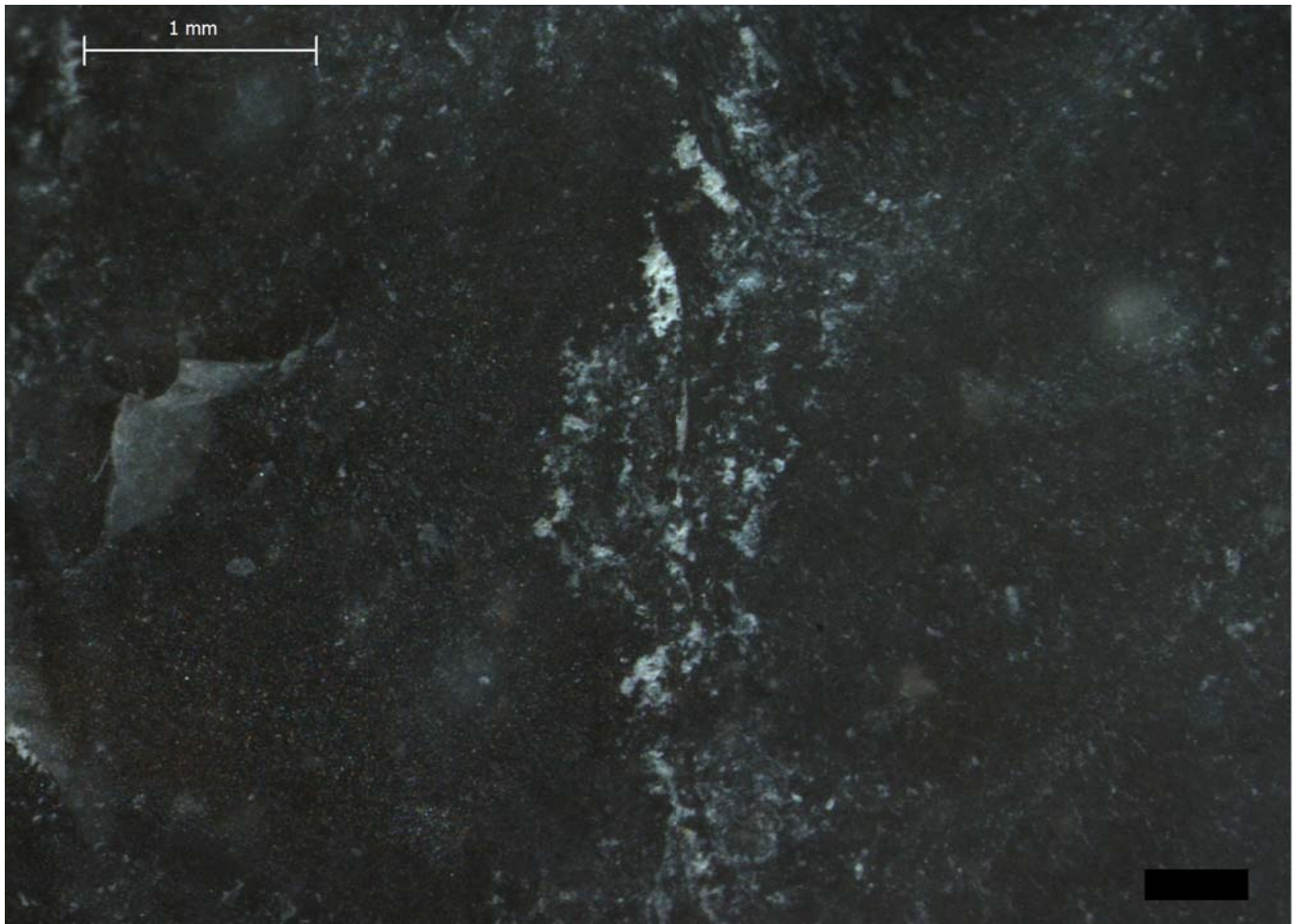
Blind Test 1

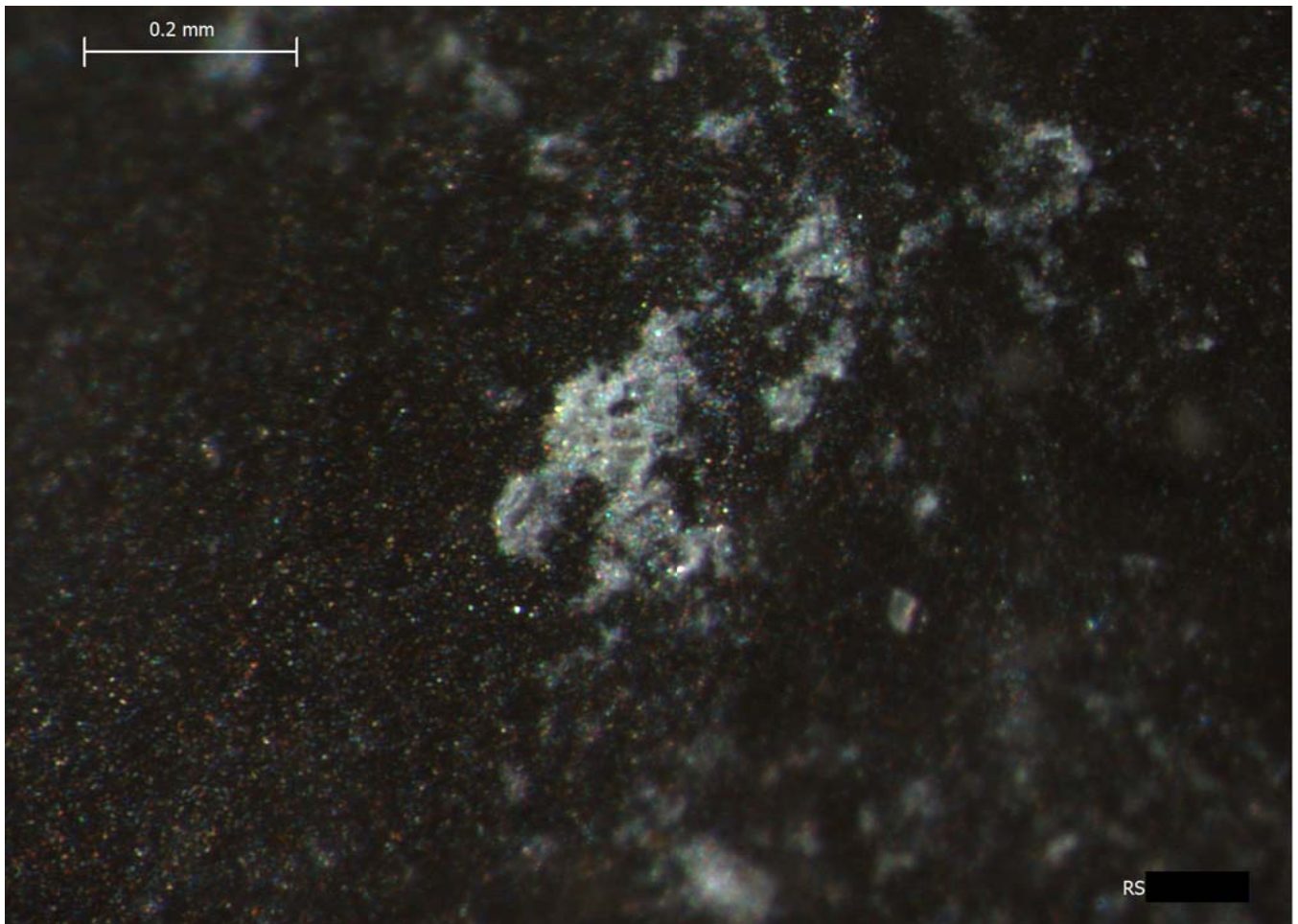
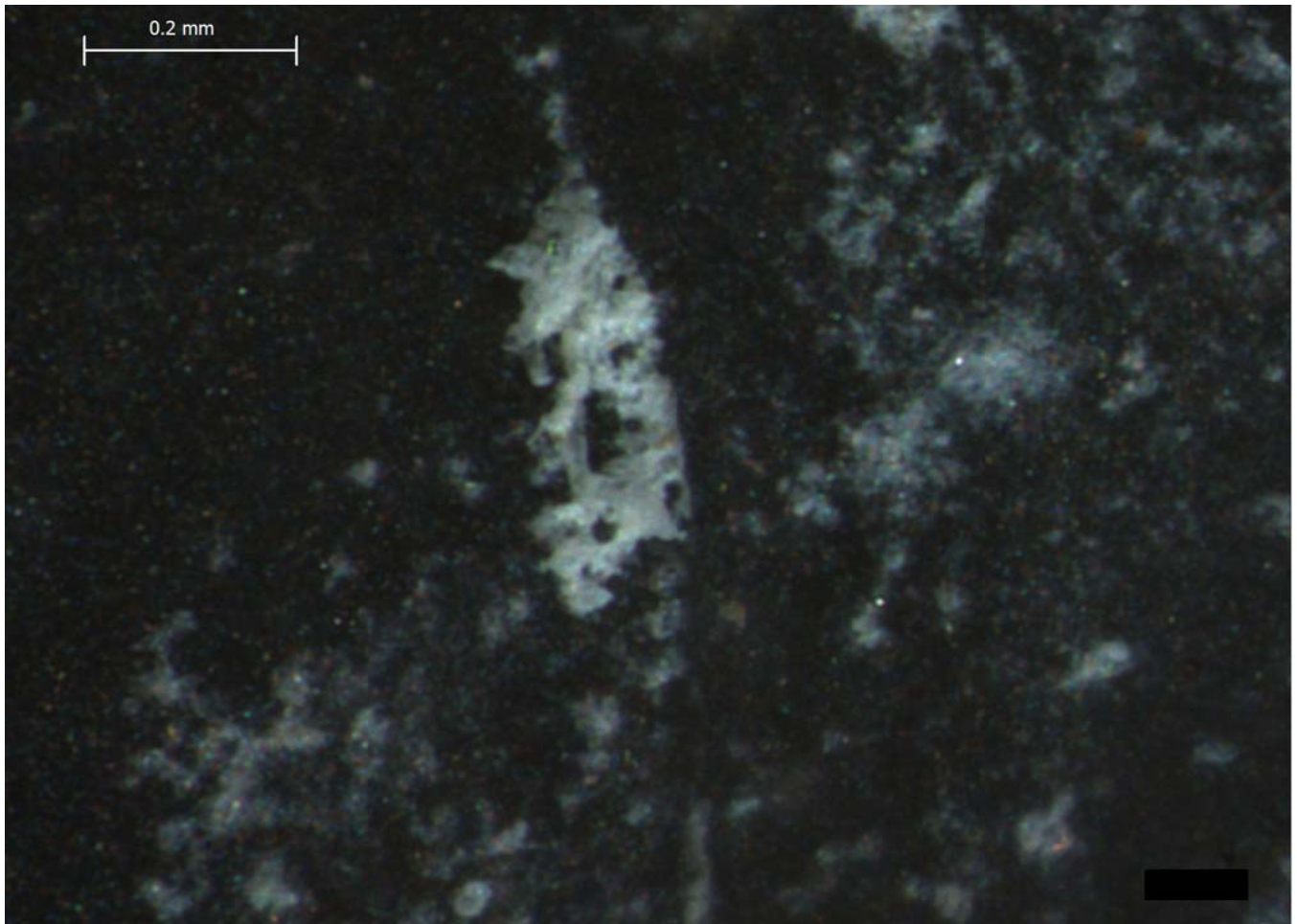
Residue 7Da



Blind Test 1

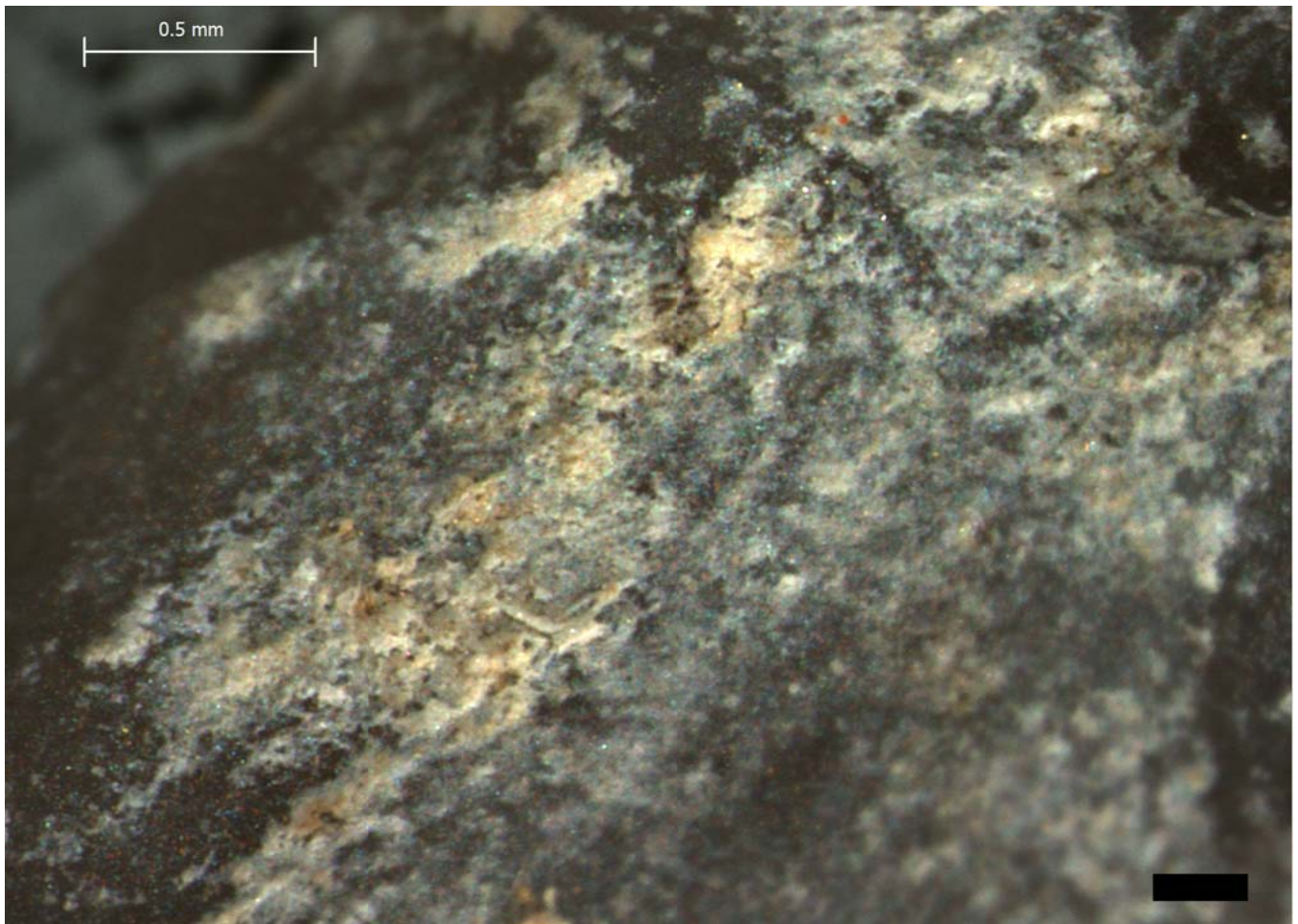
Residue 7Db

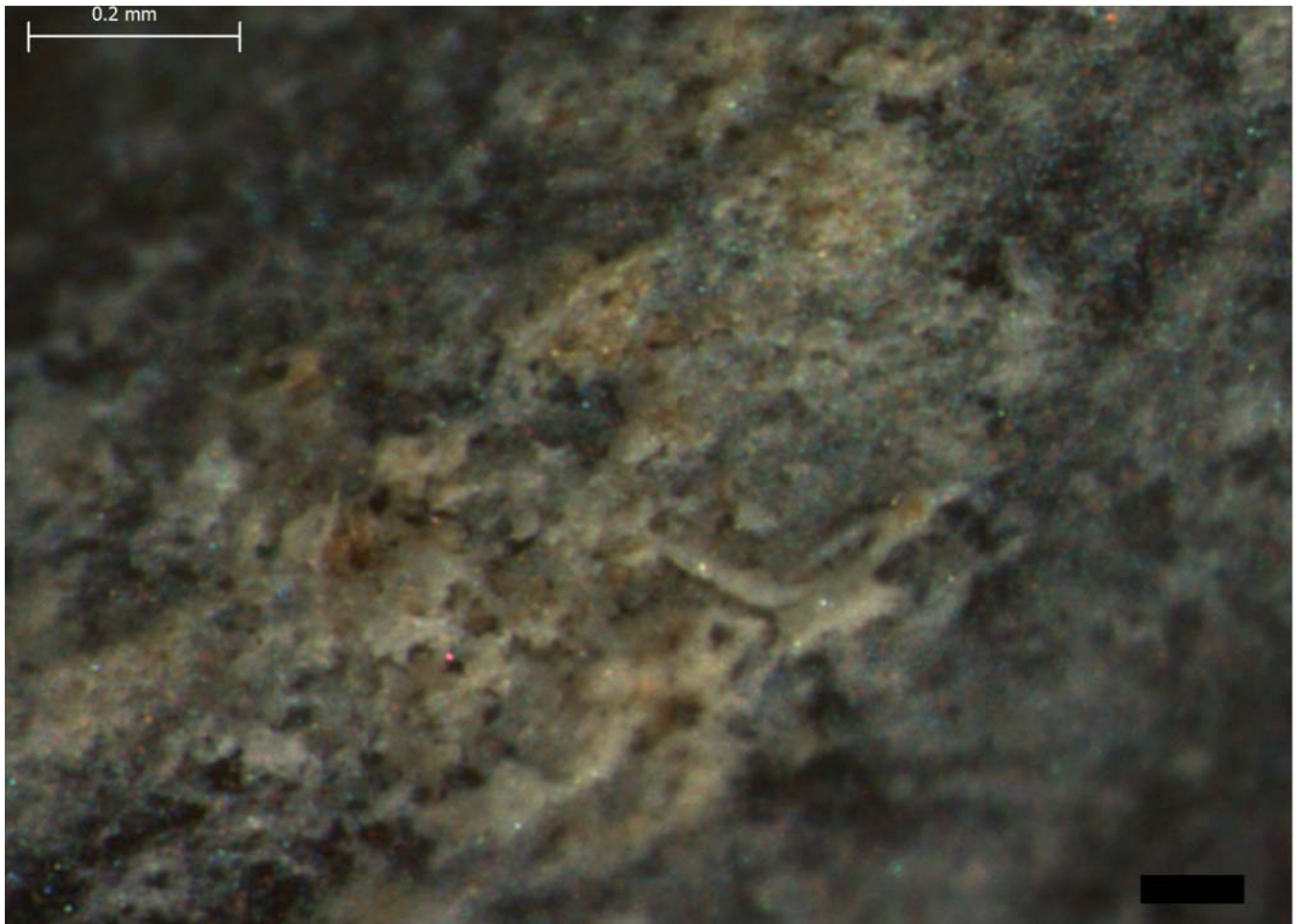


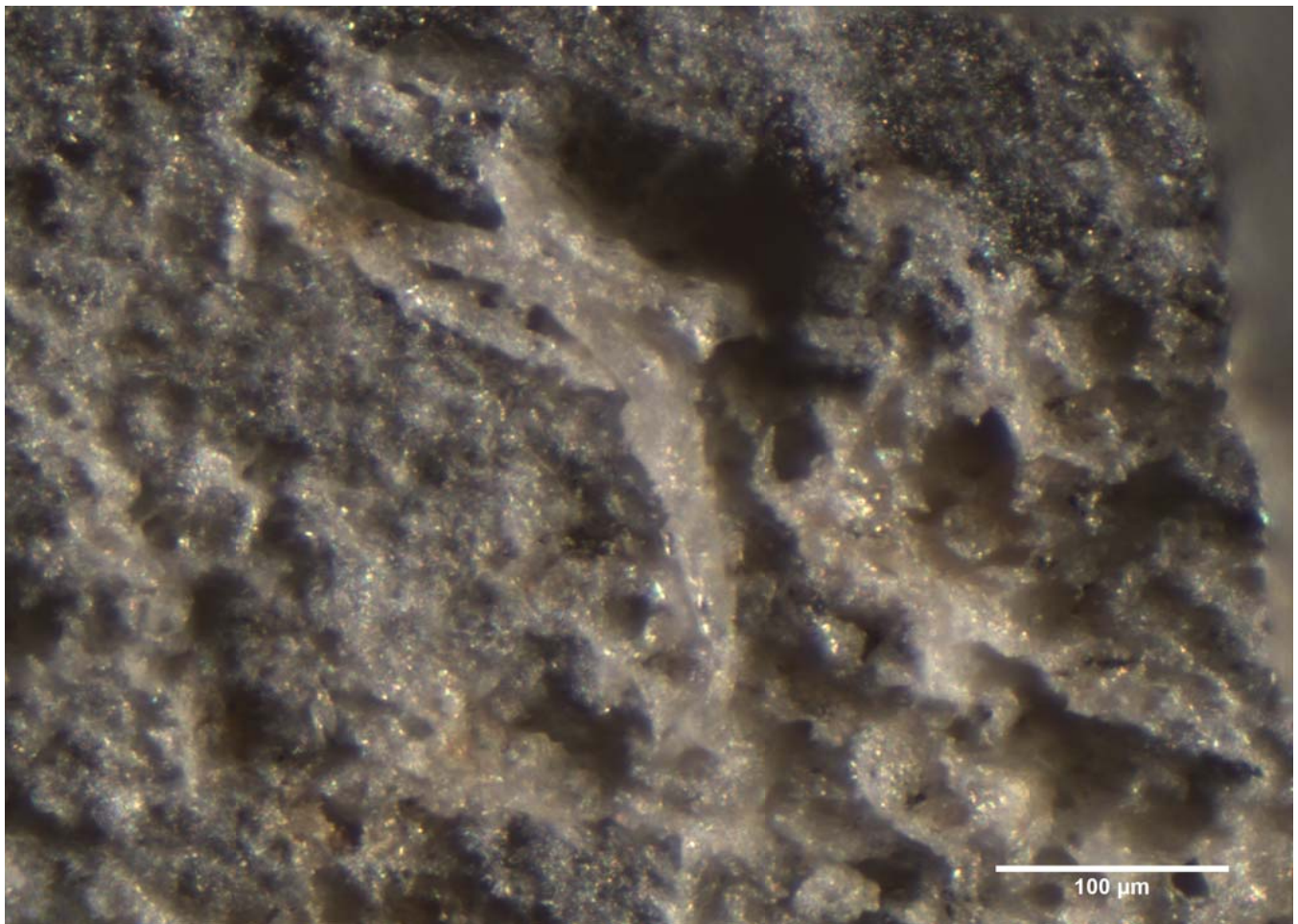
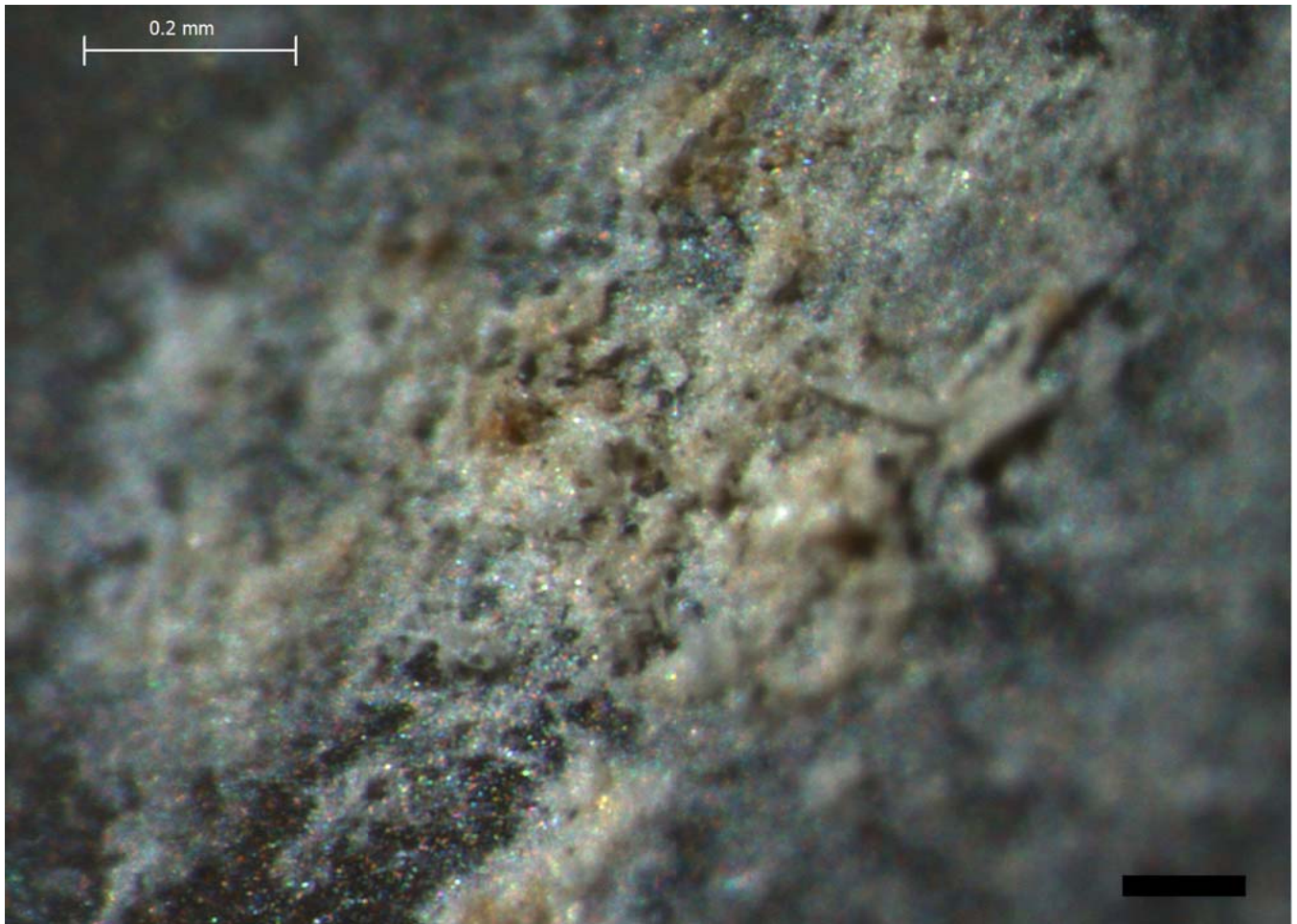


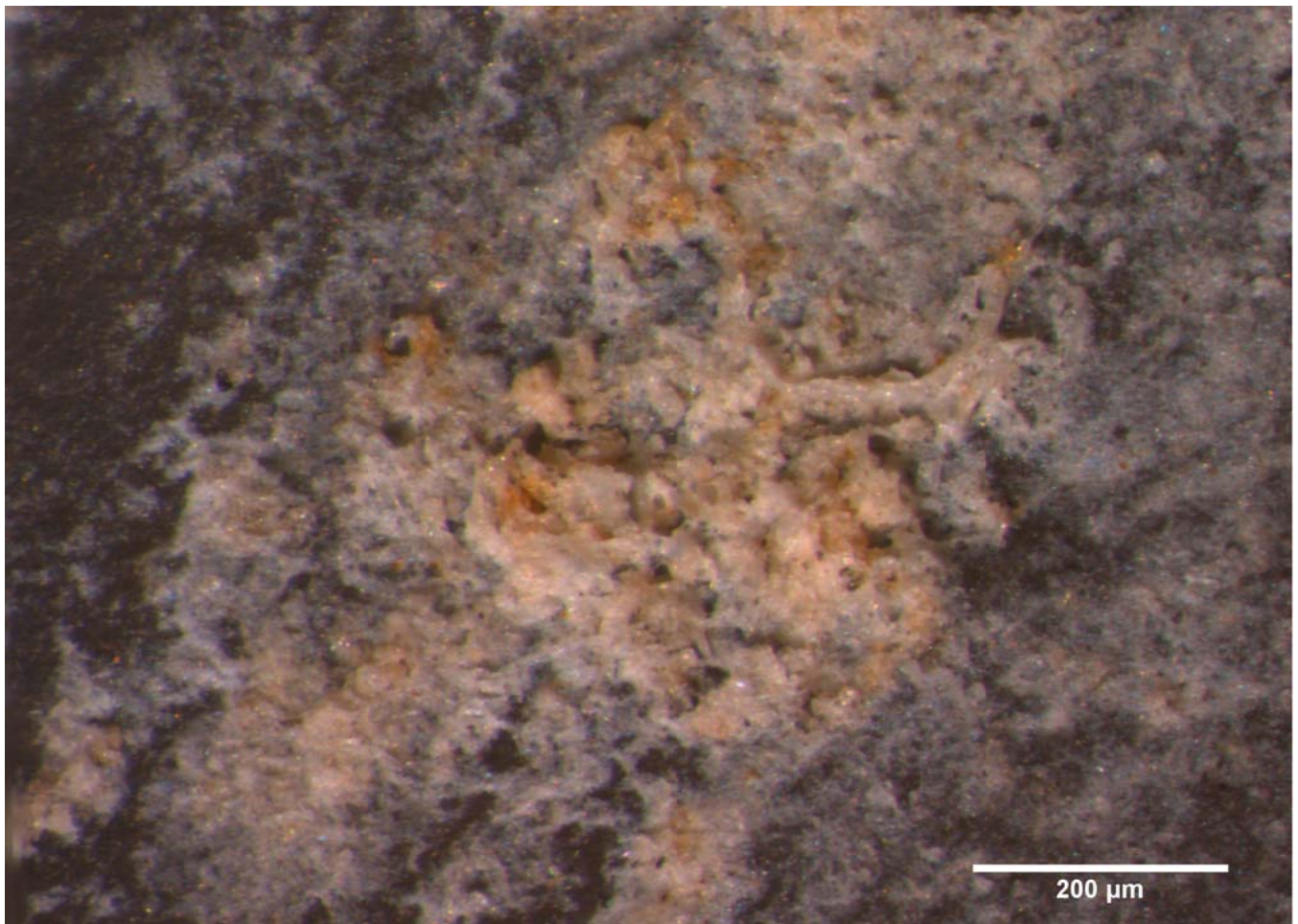
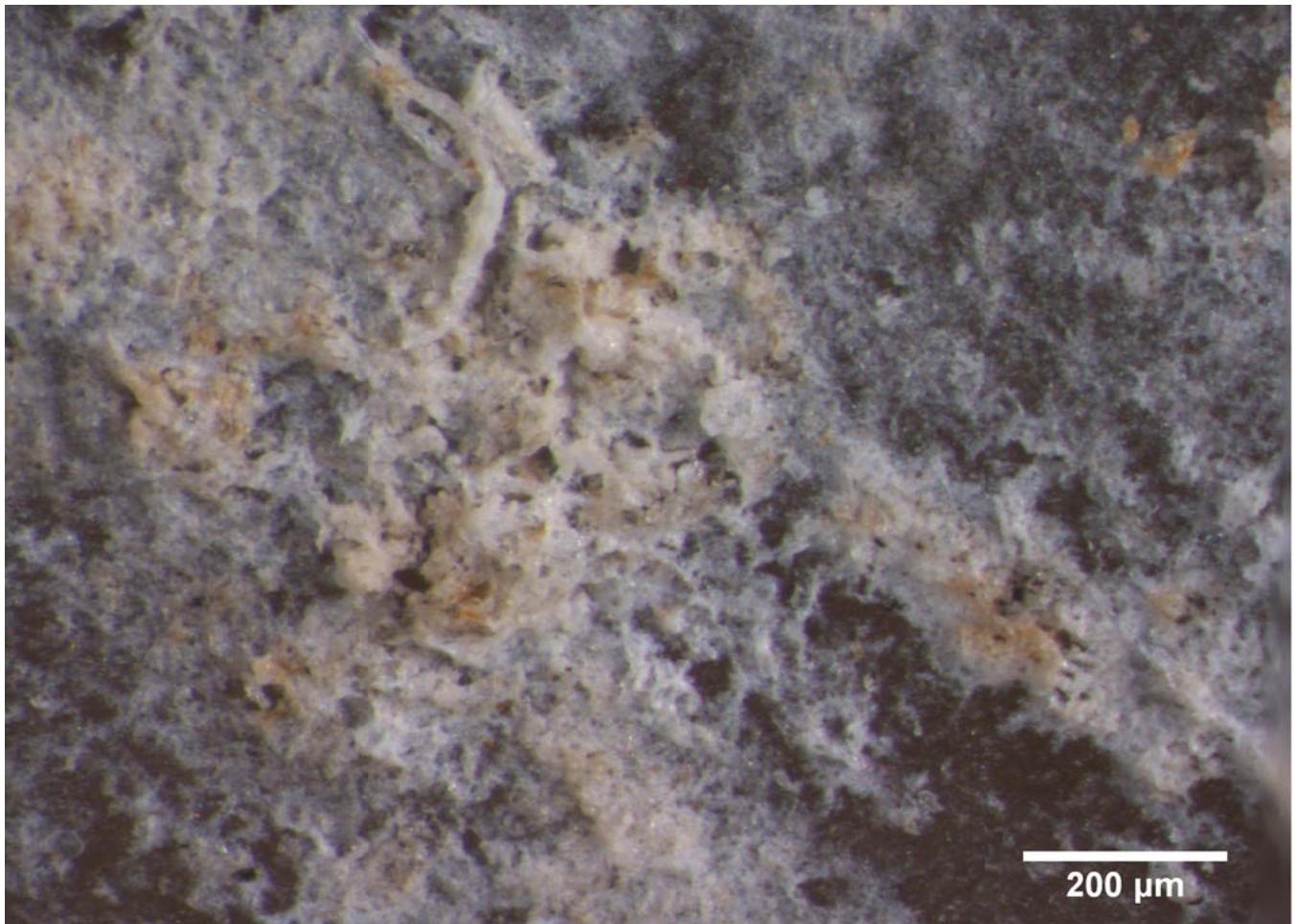
Blind Test 1

Residue 7Dc



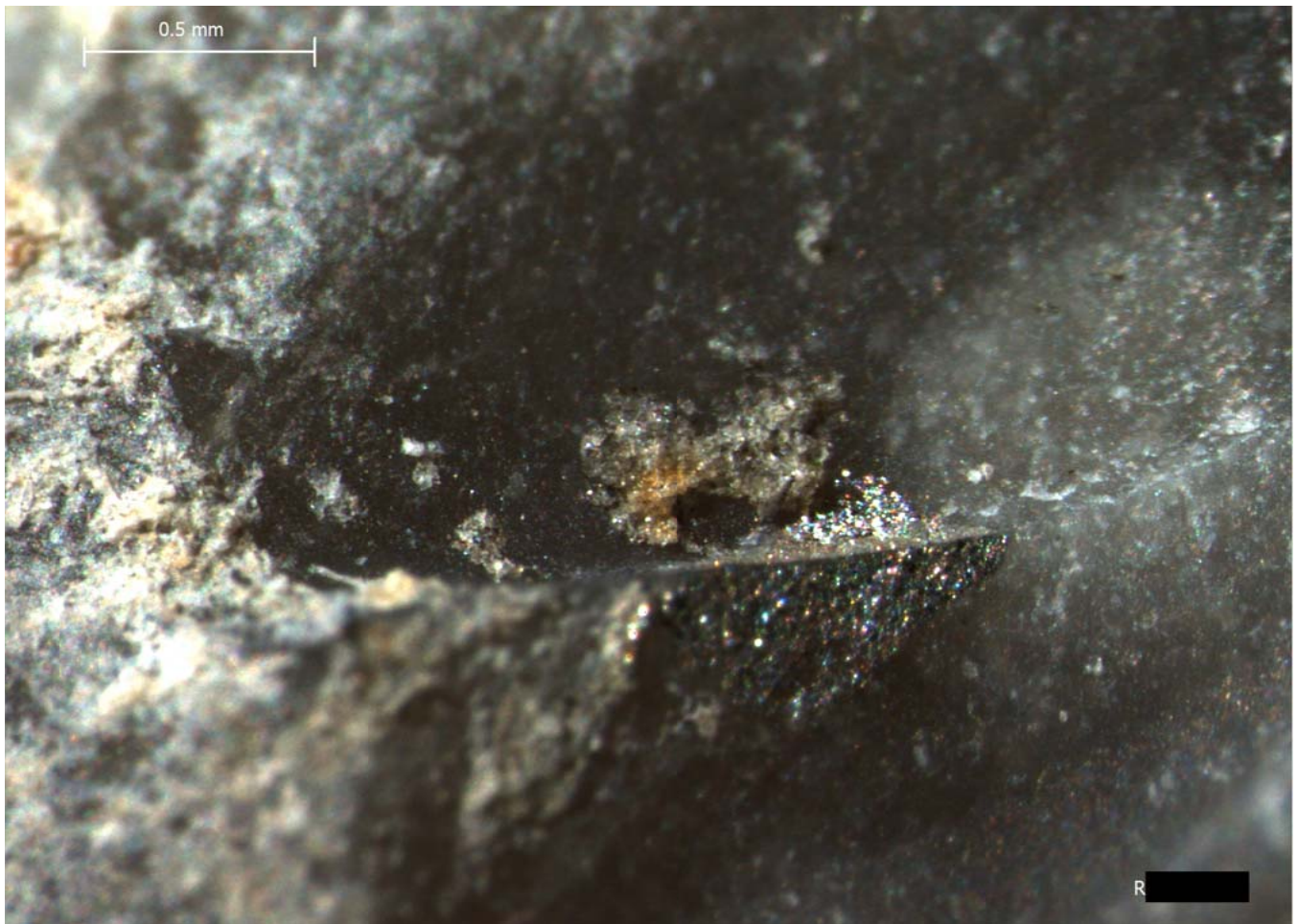
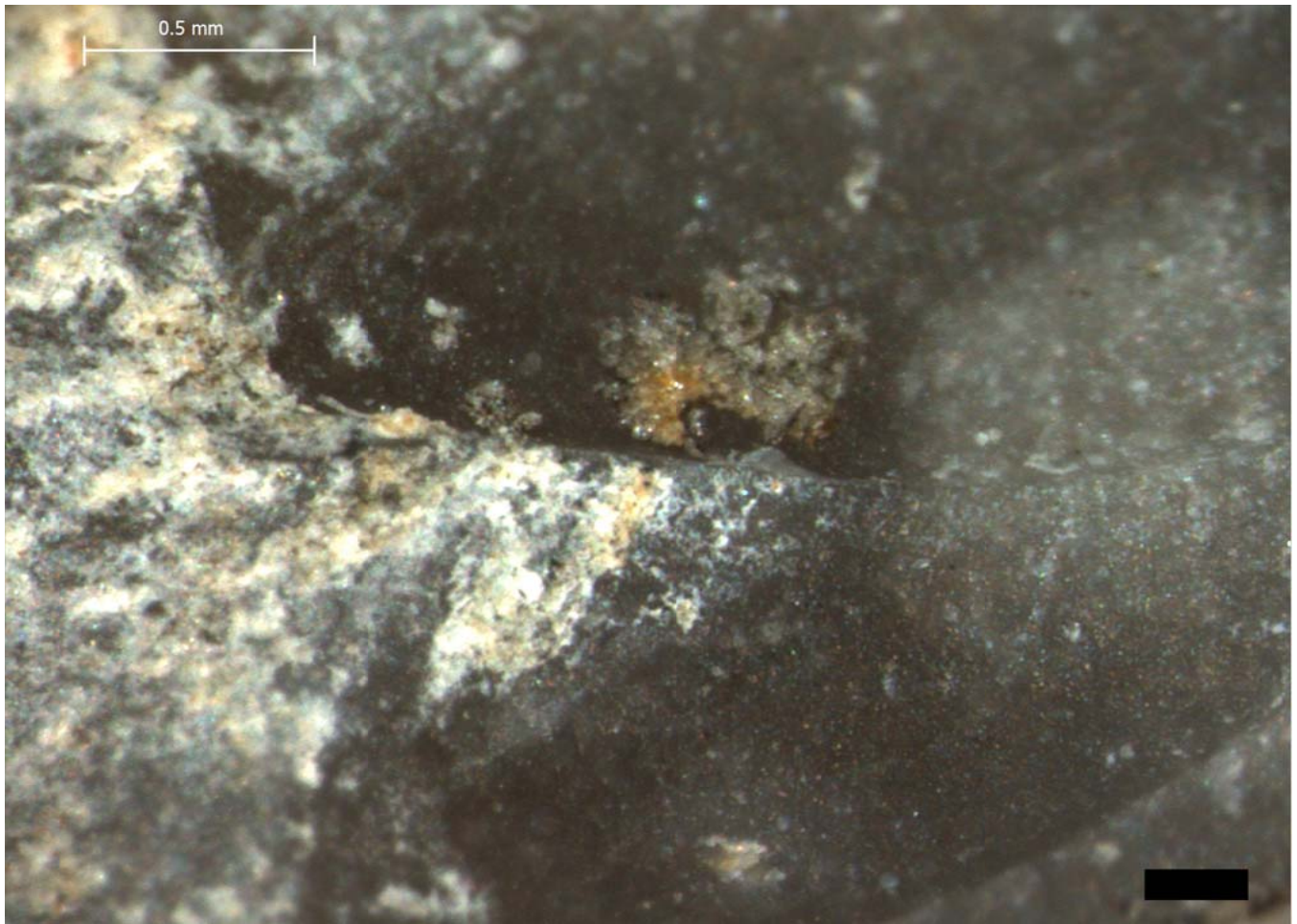


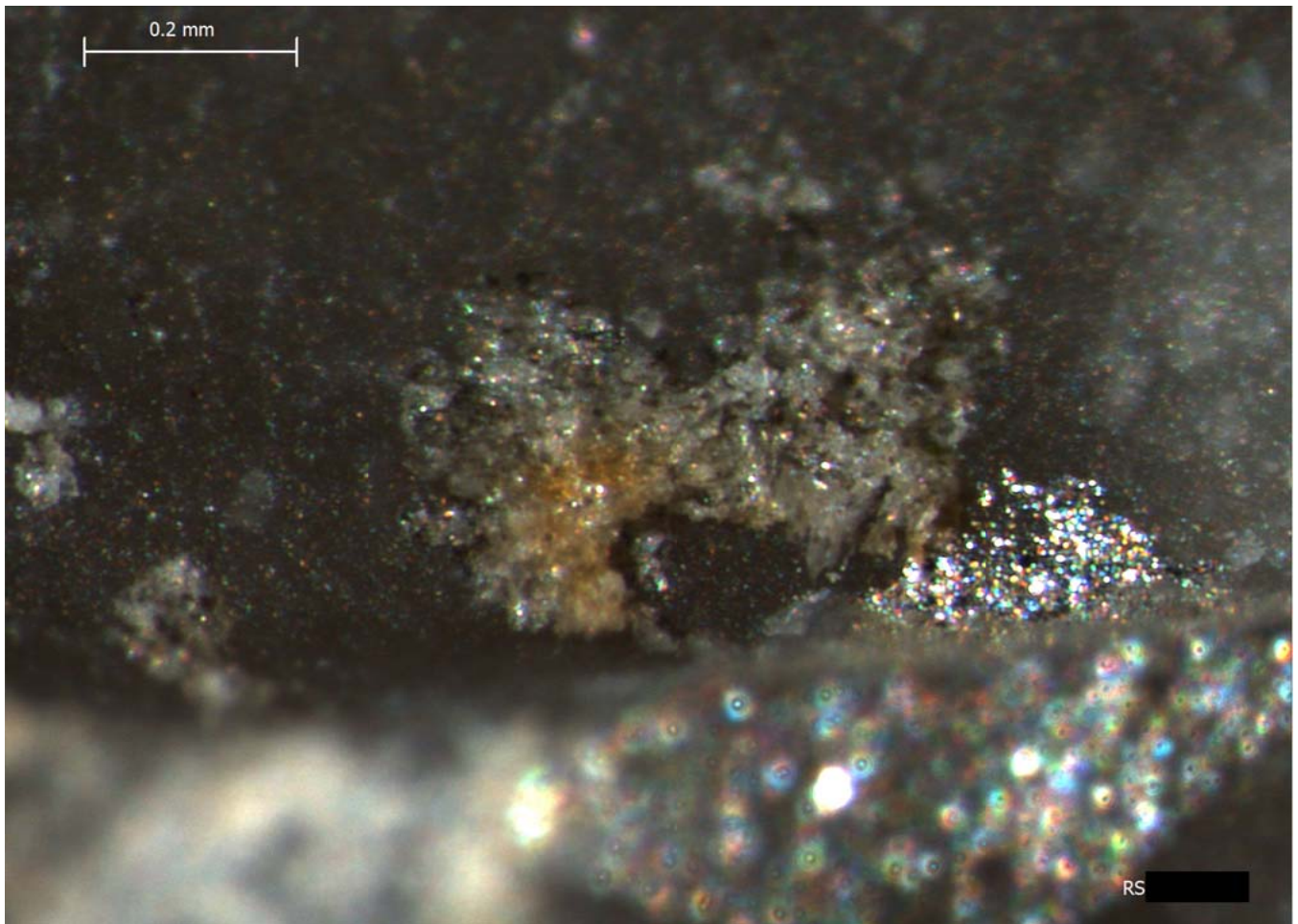
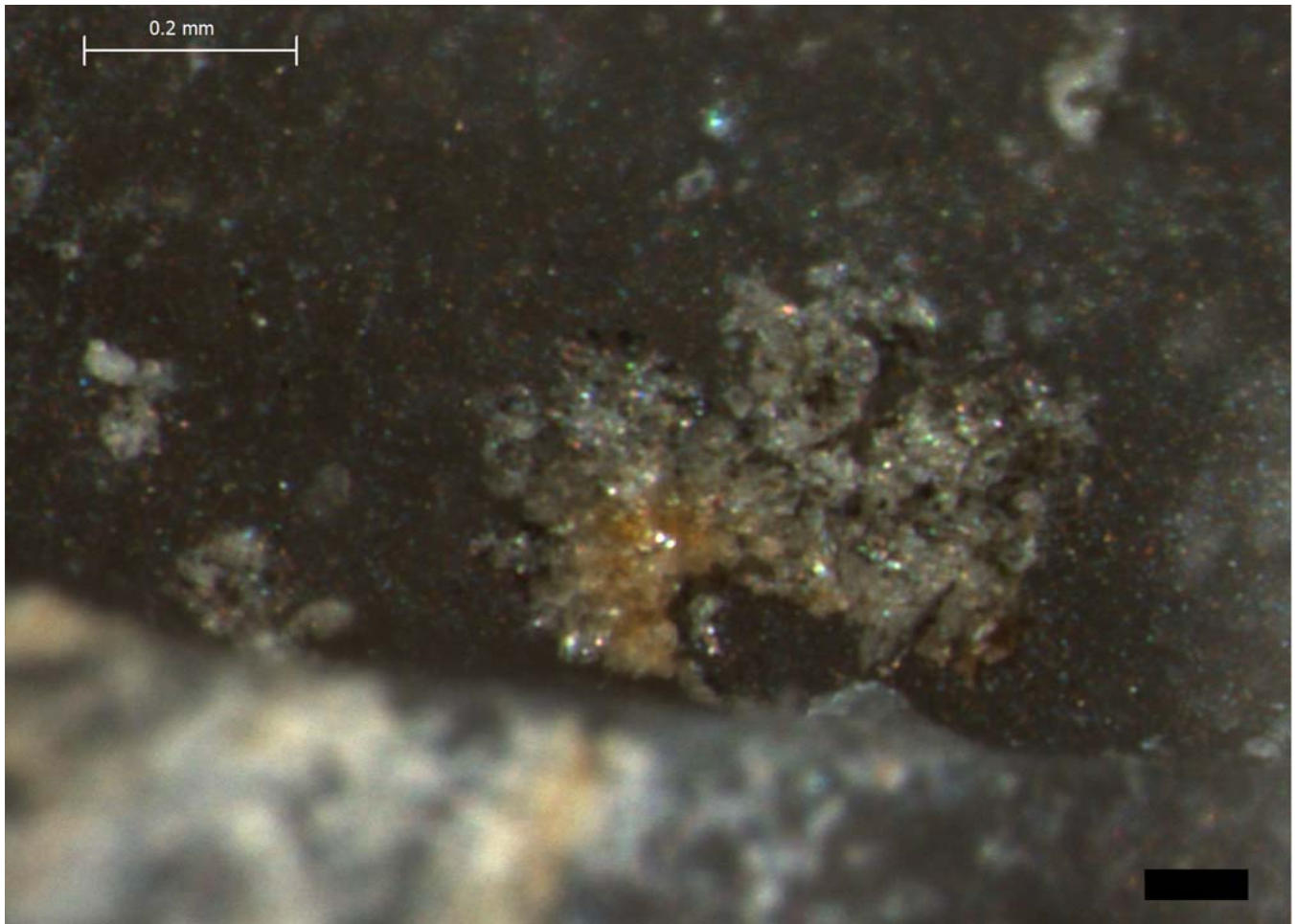




Blind Test 1

Residue 7Dd





Blind Test 1

Residue 7Df

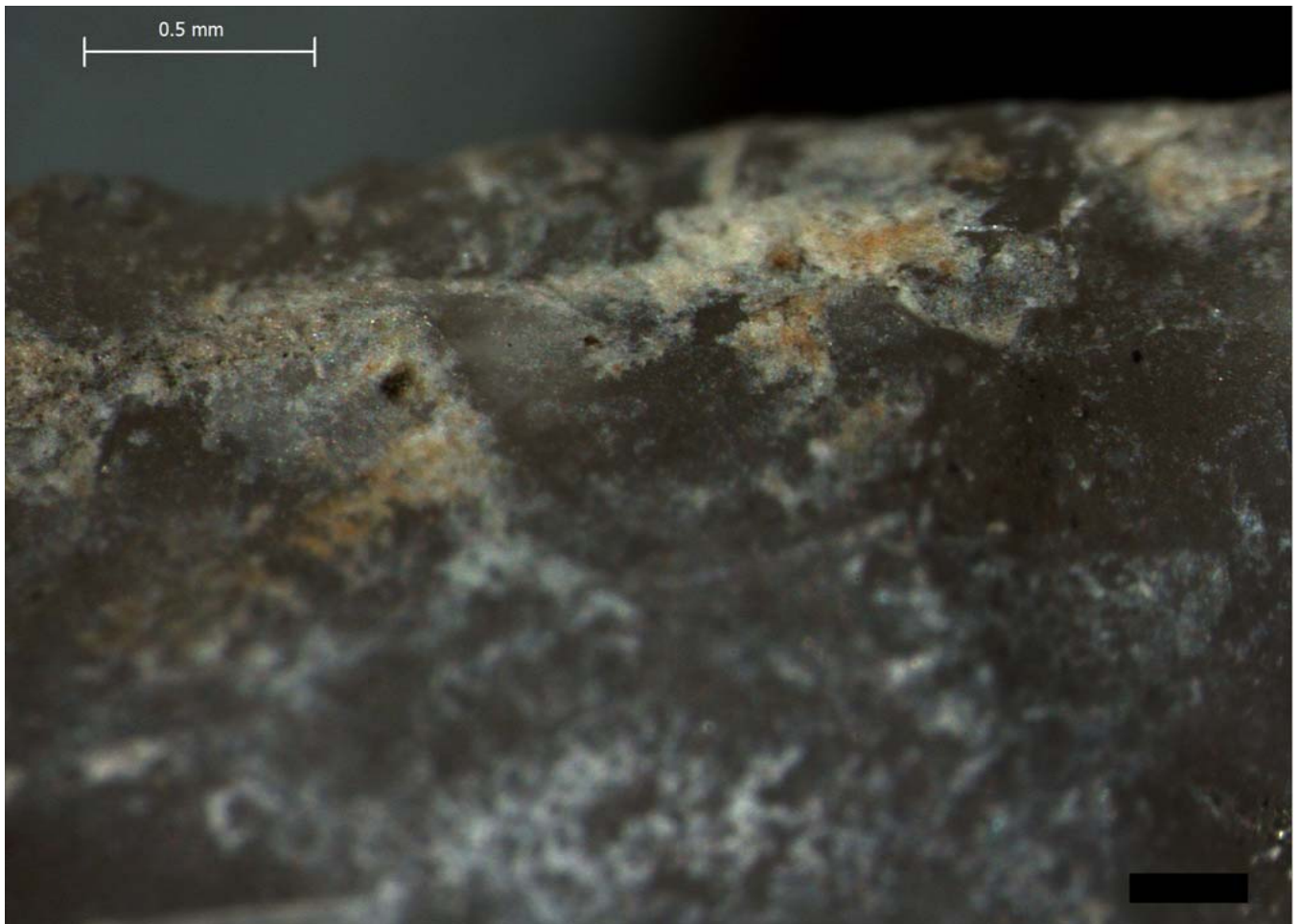
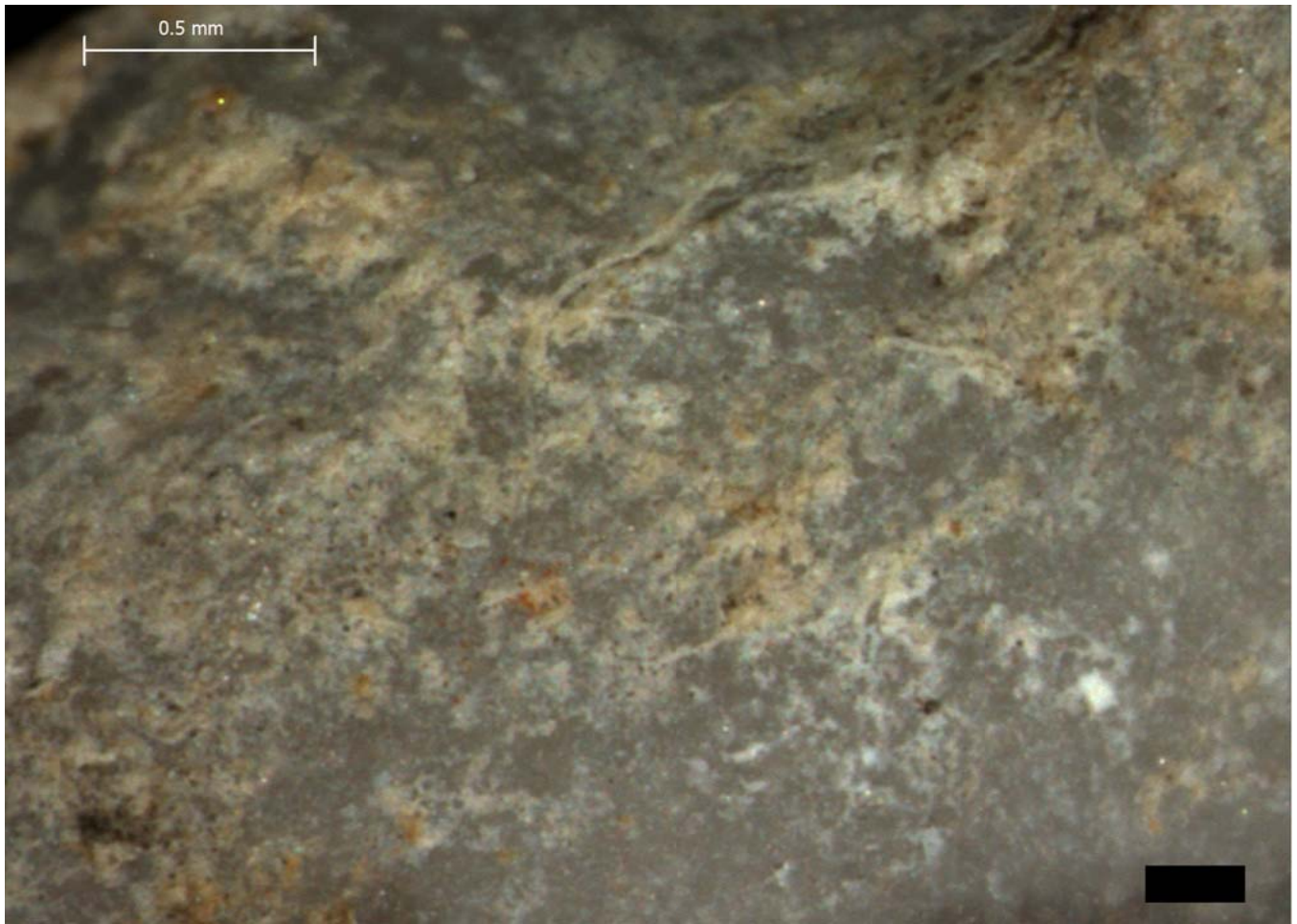


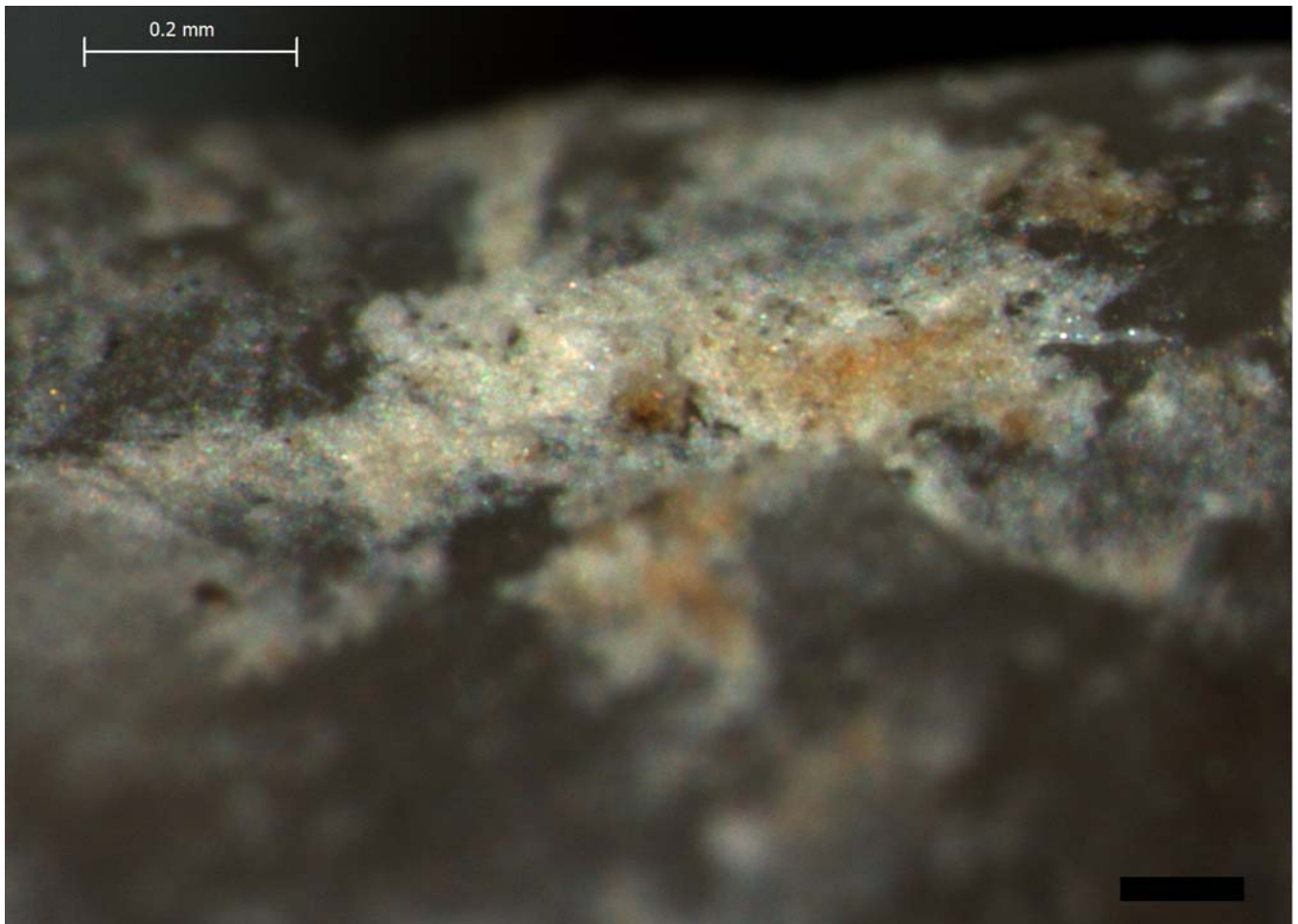
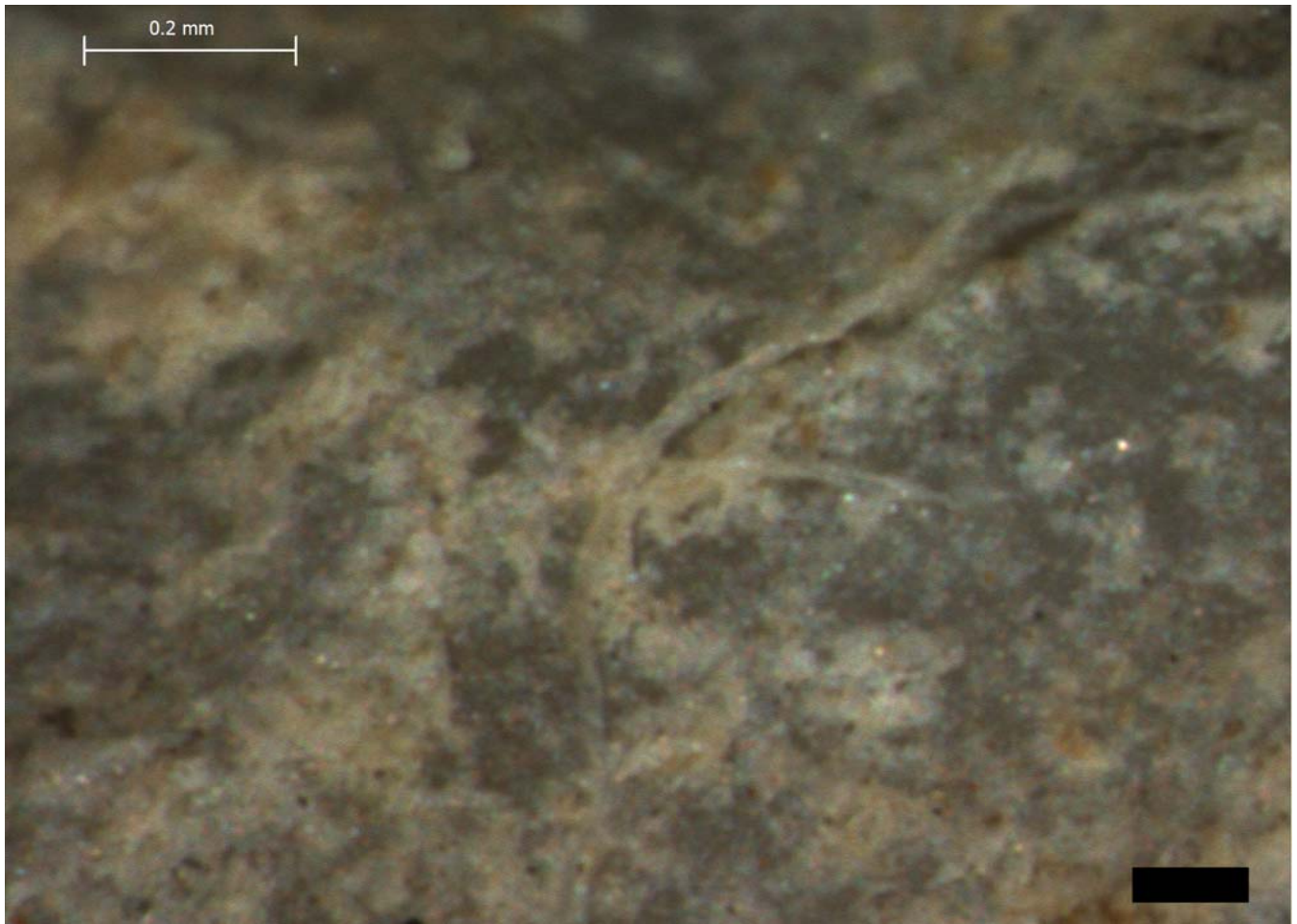


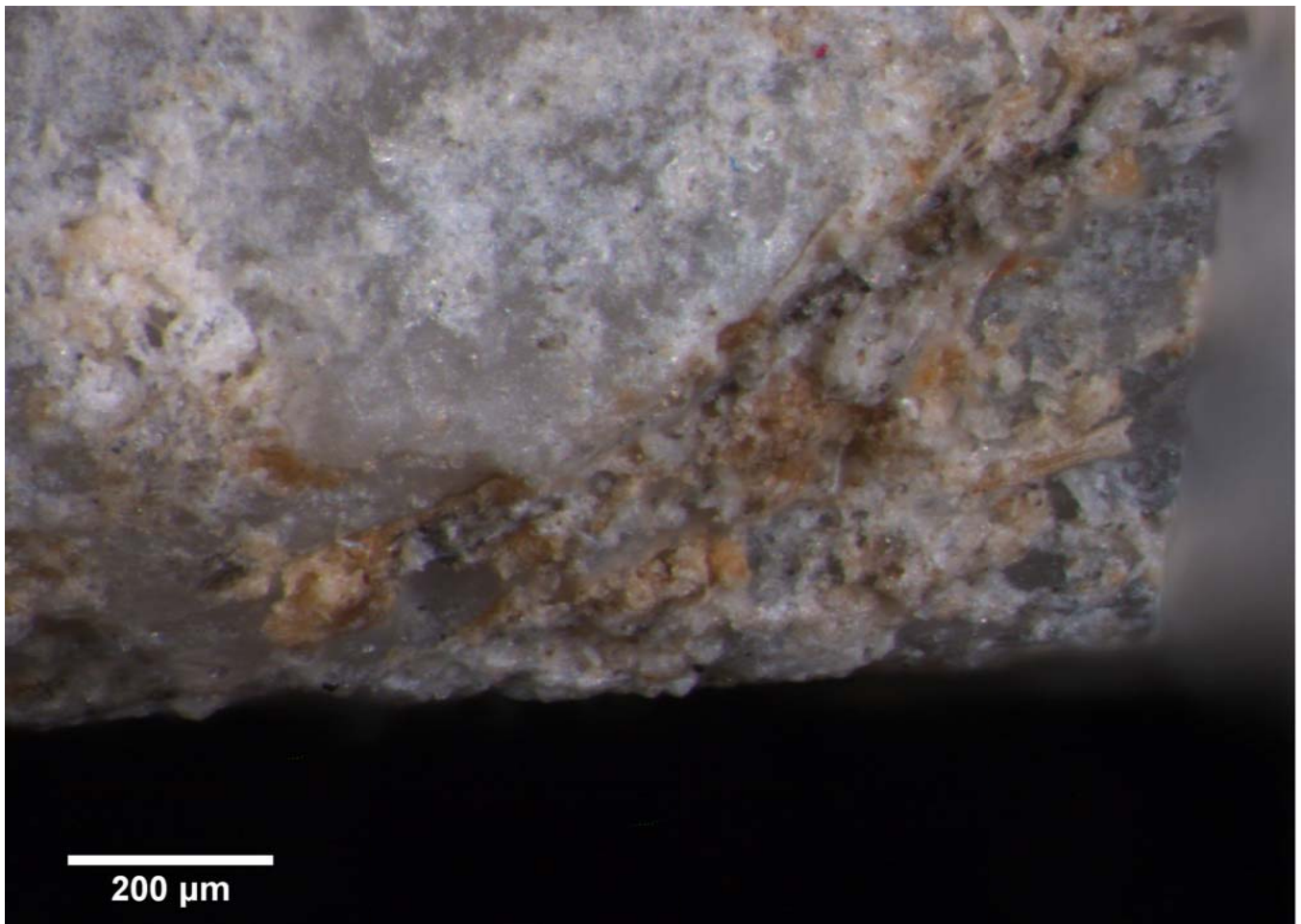
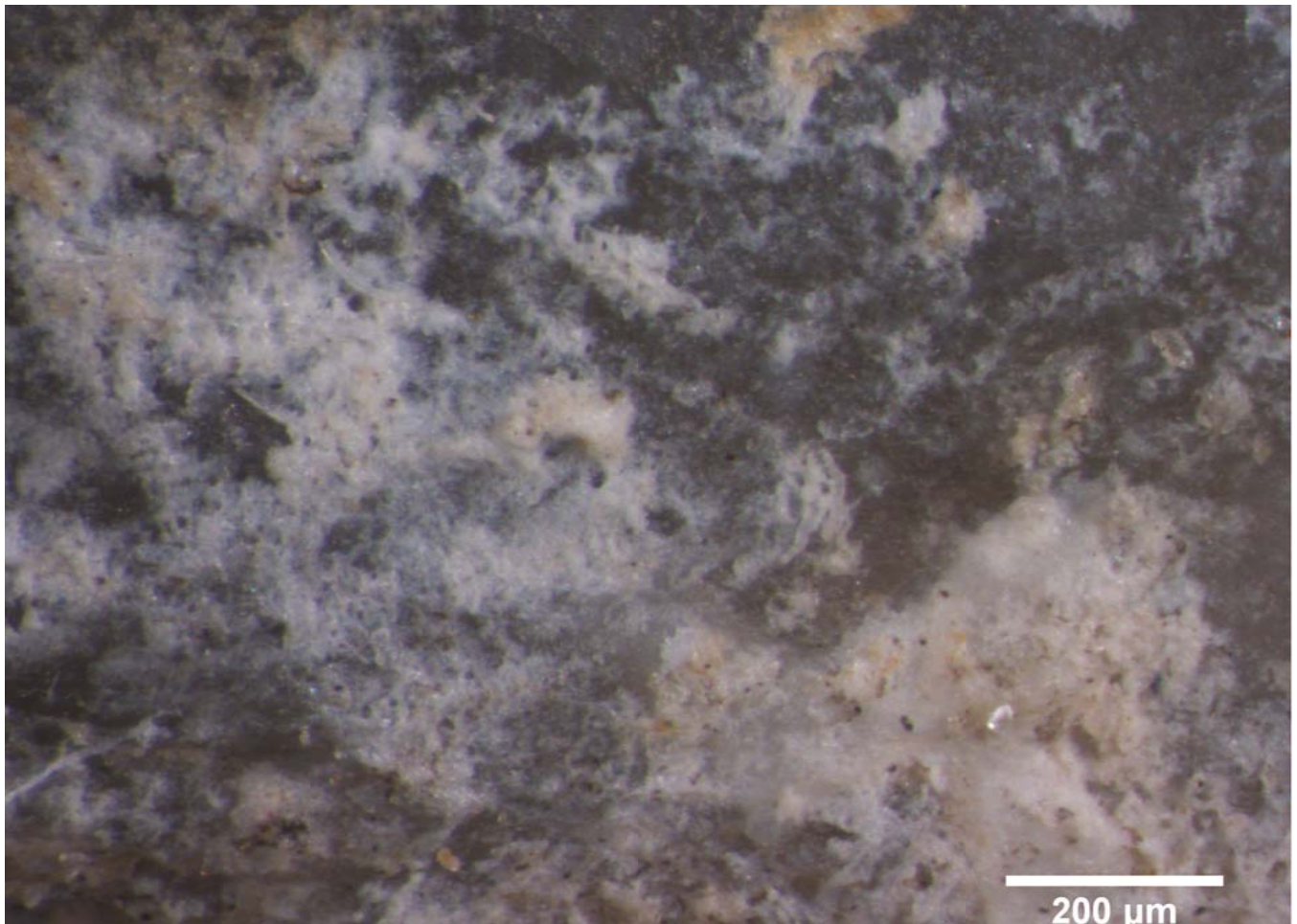
Blind Test 1

Residue 7Dg



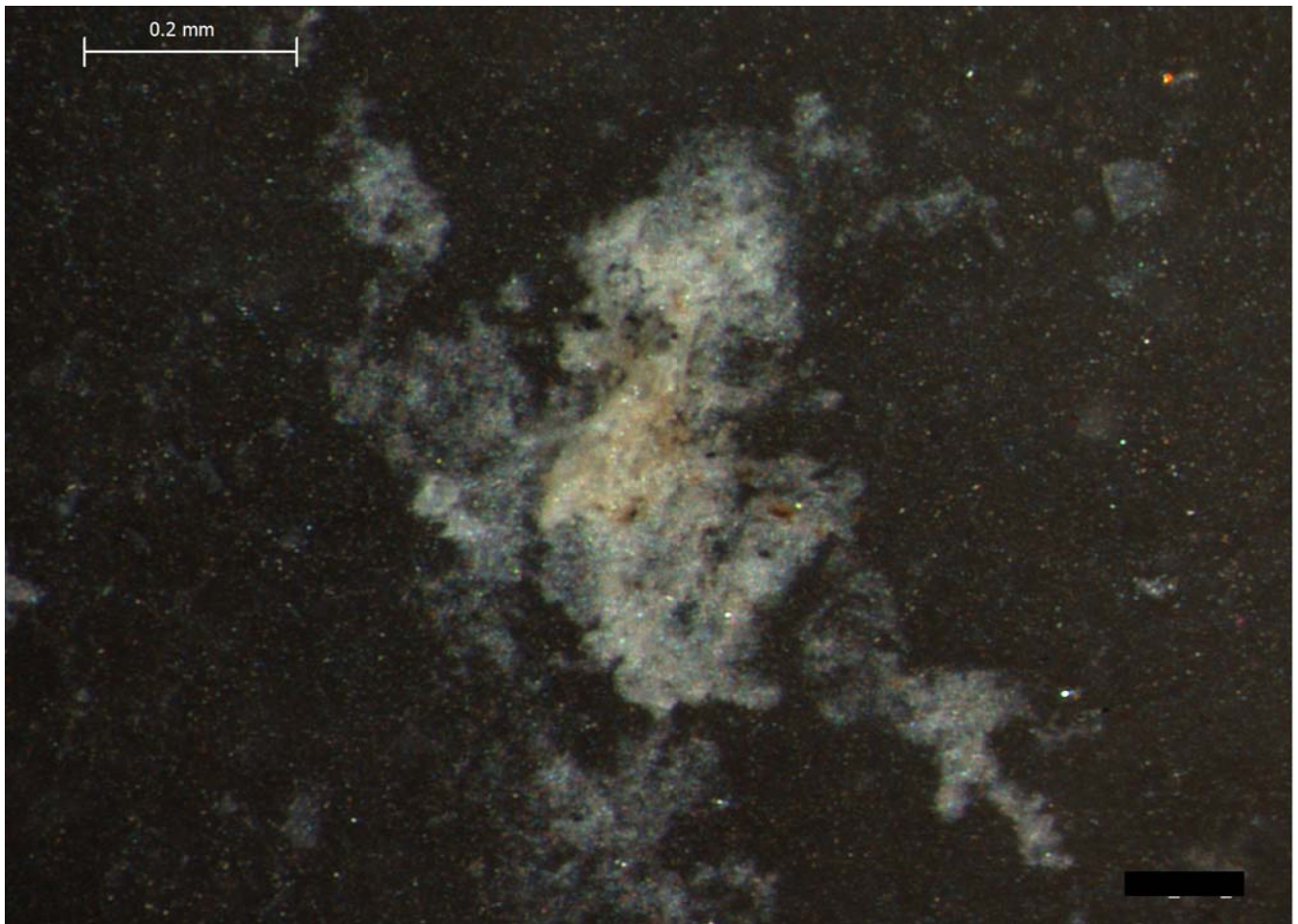
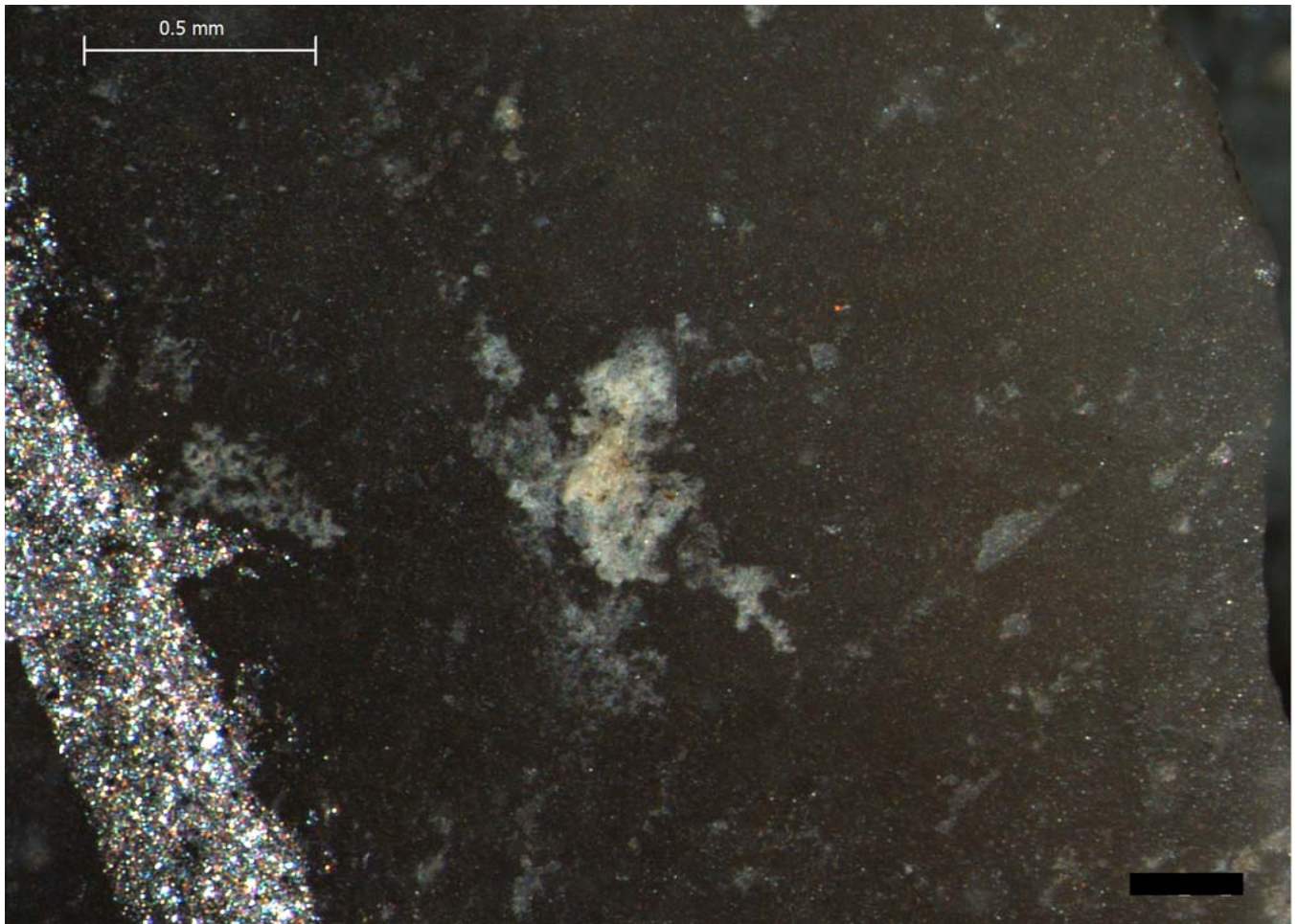


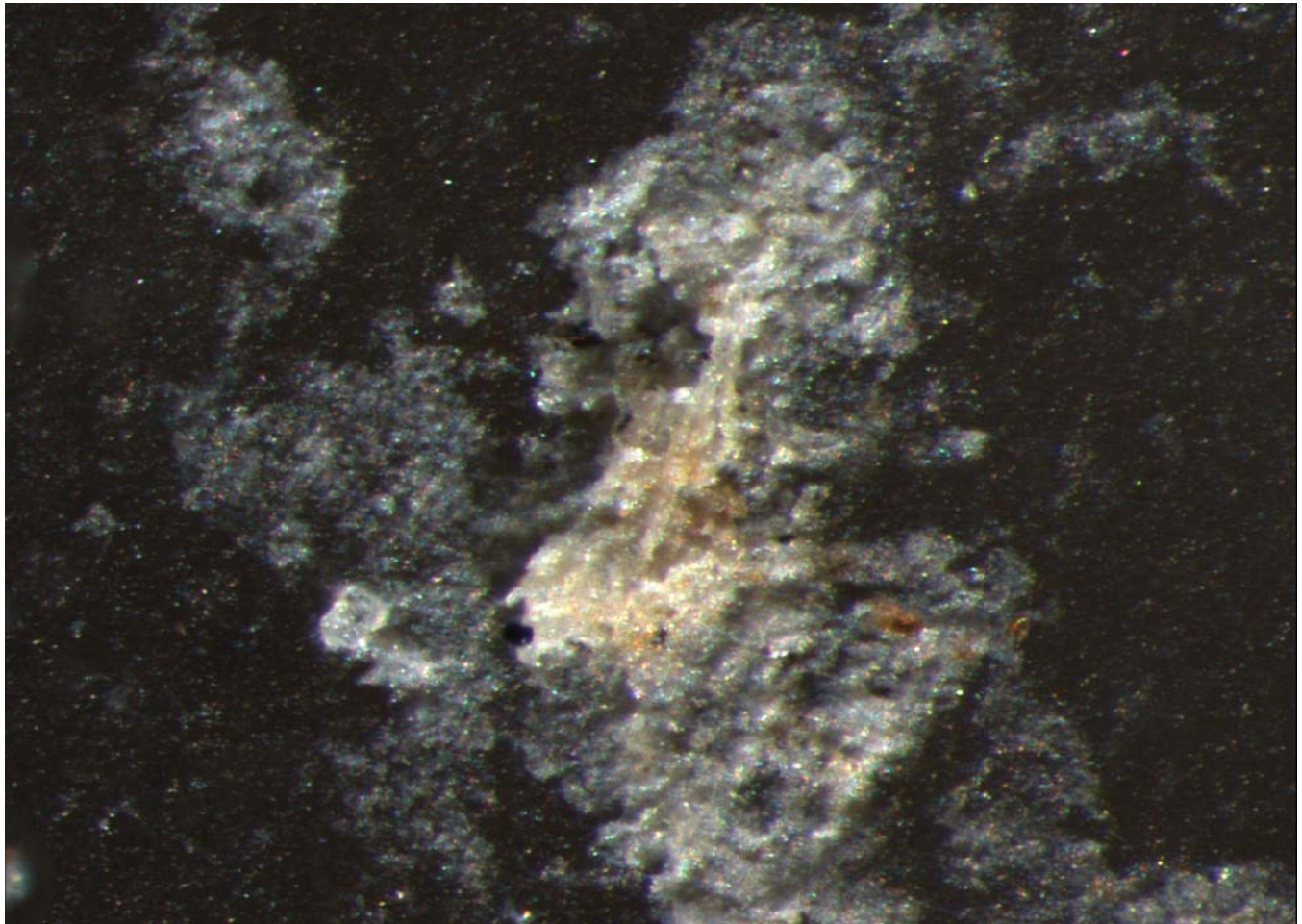
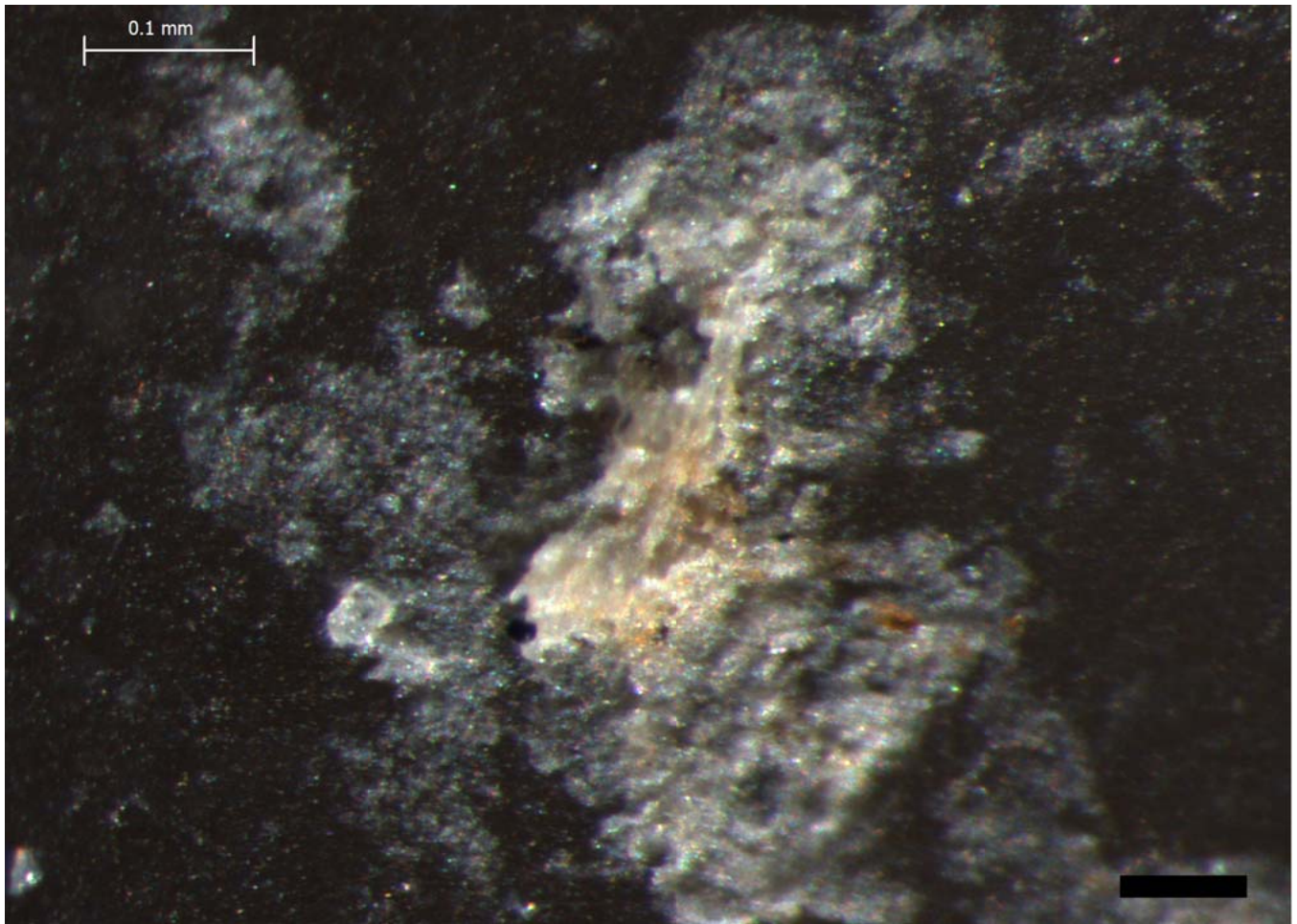


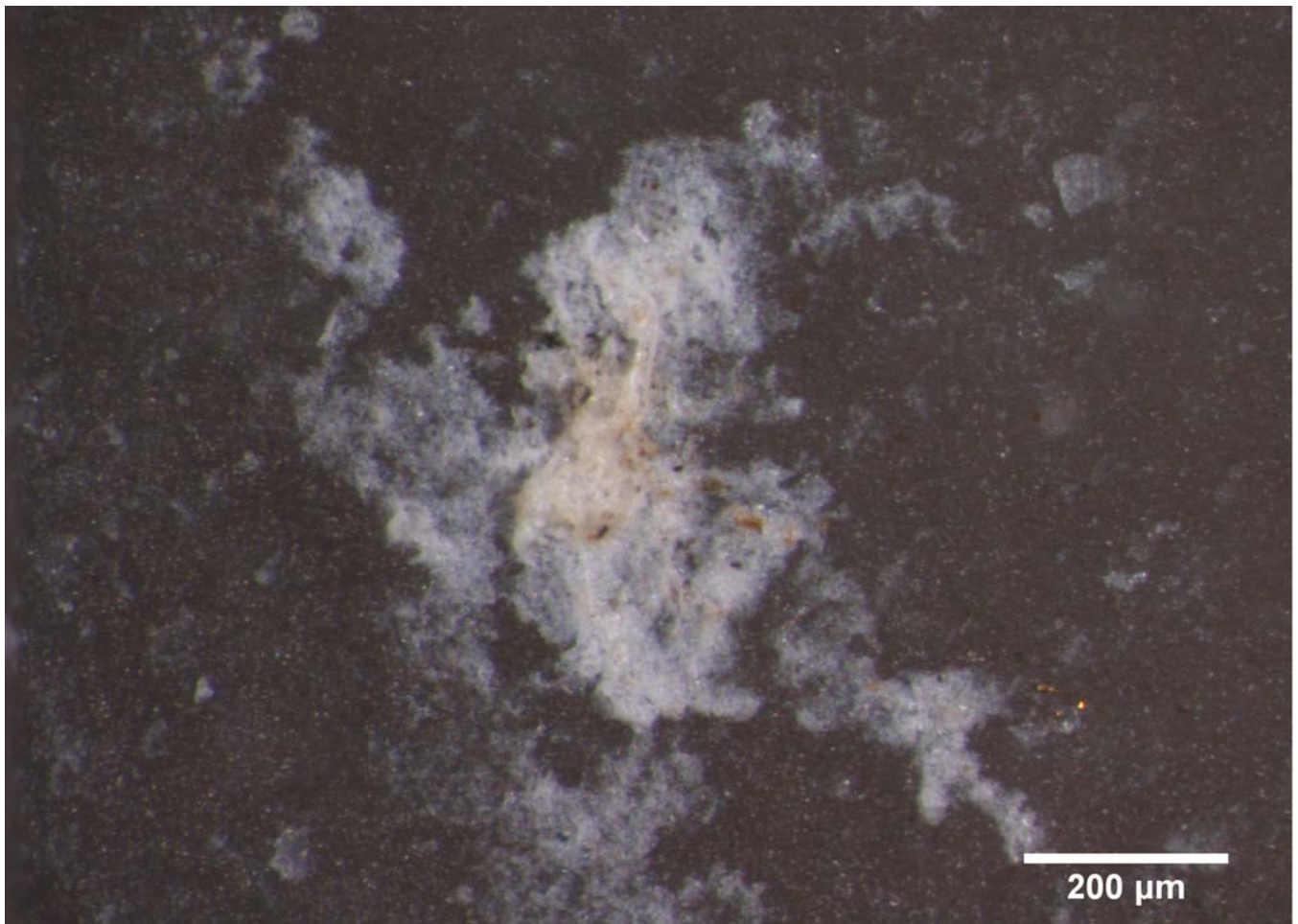
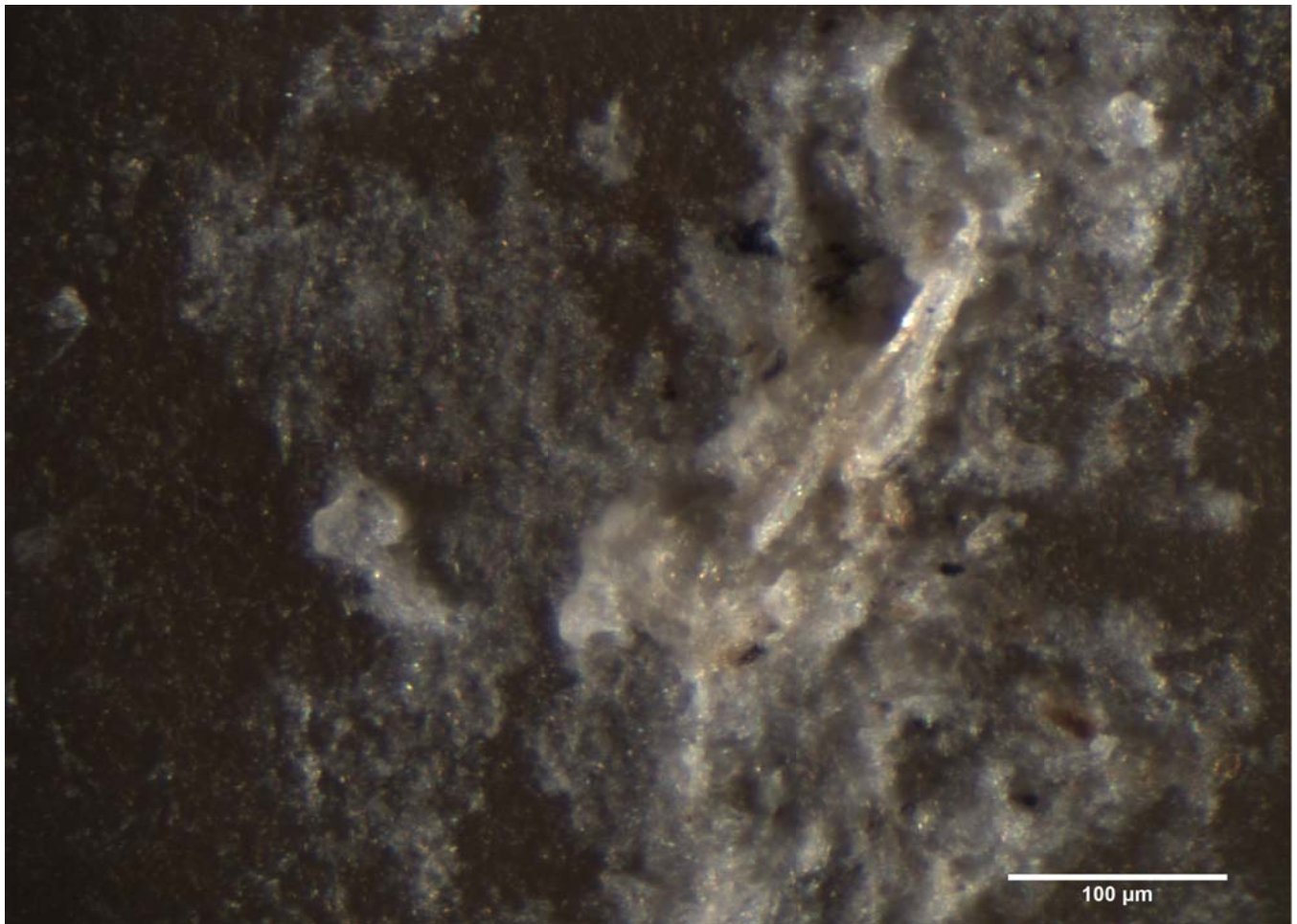


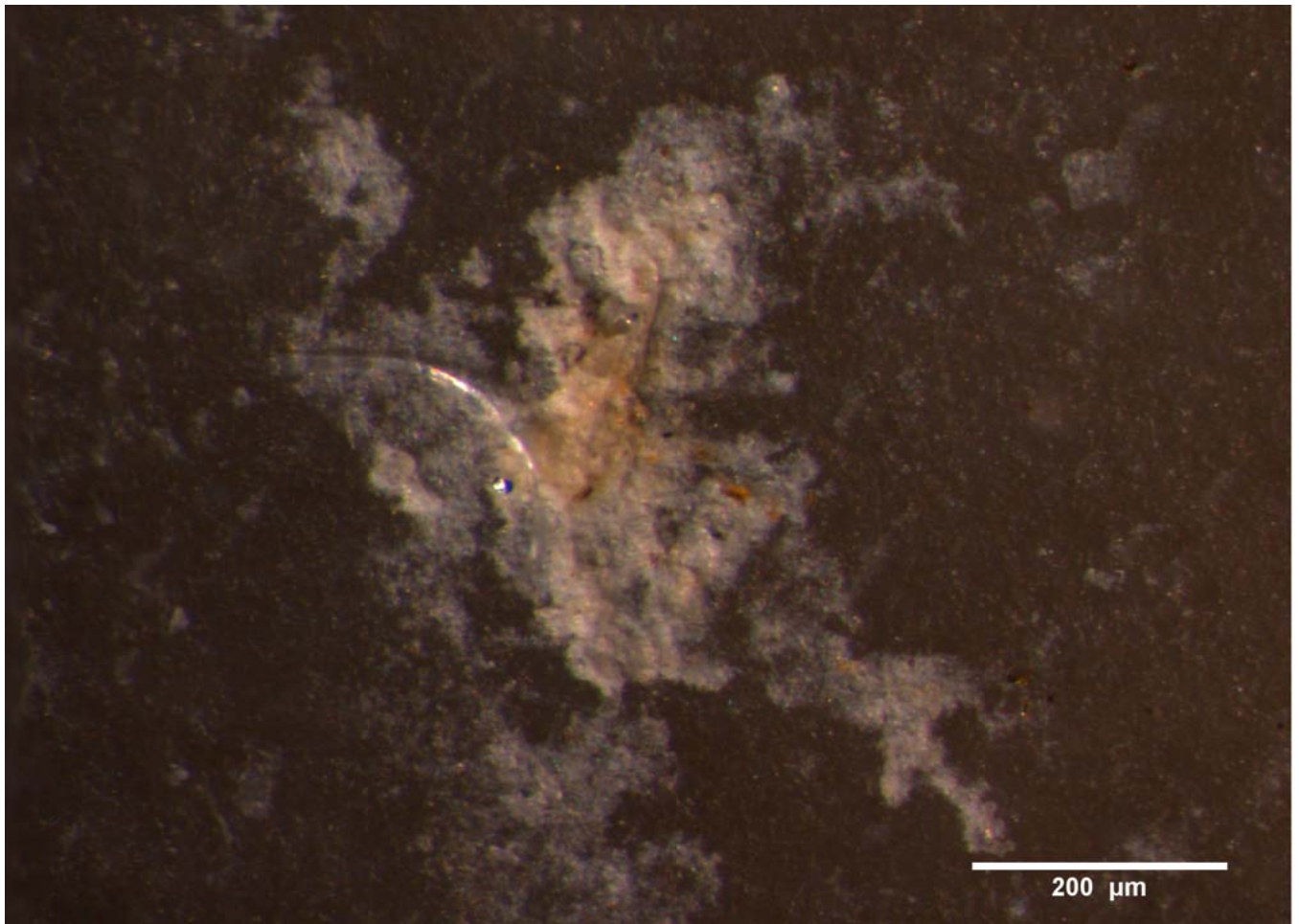
Blind Test 1

Residue 7Va



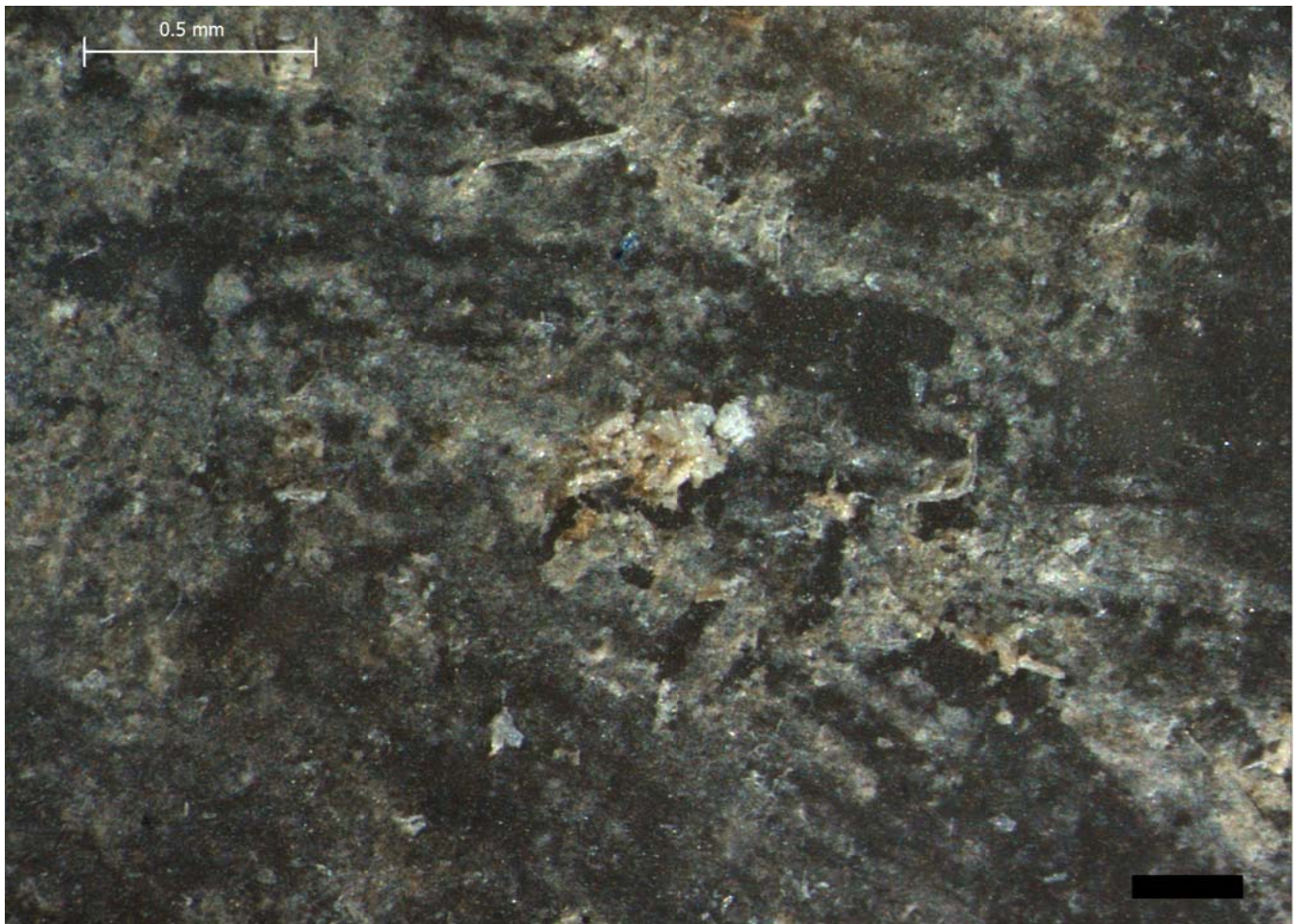
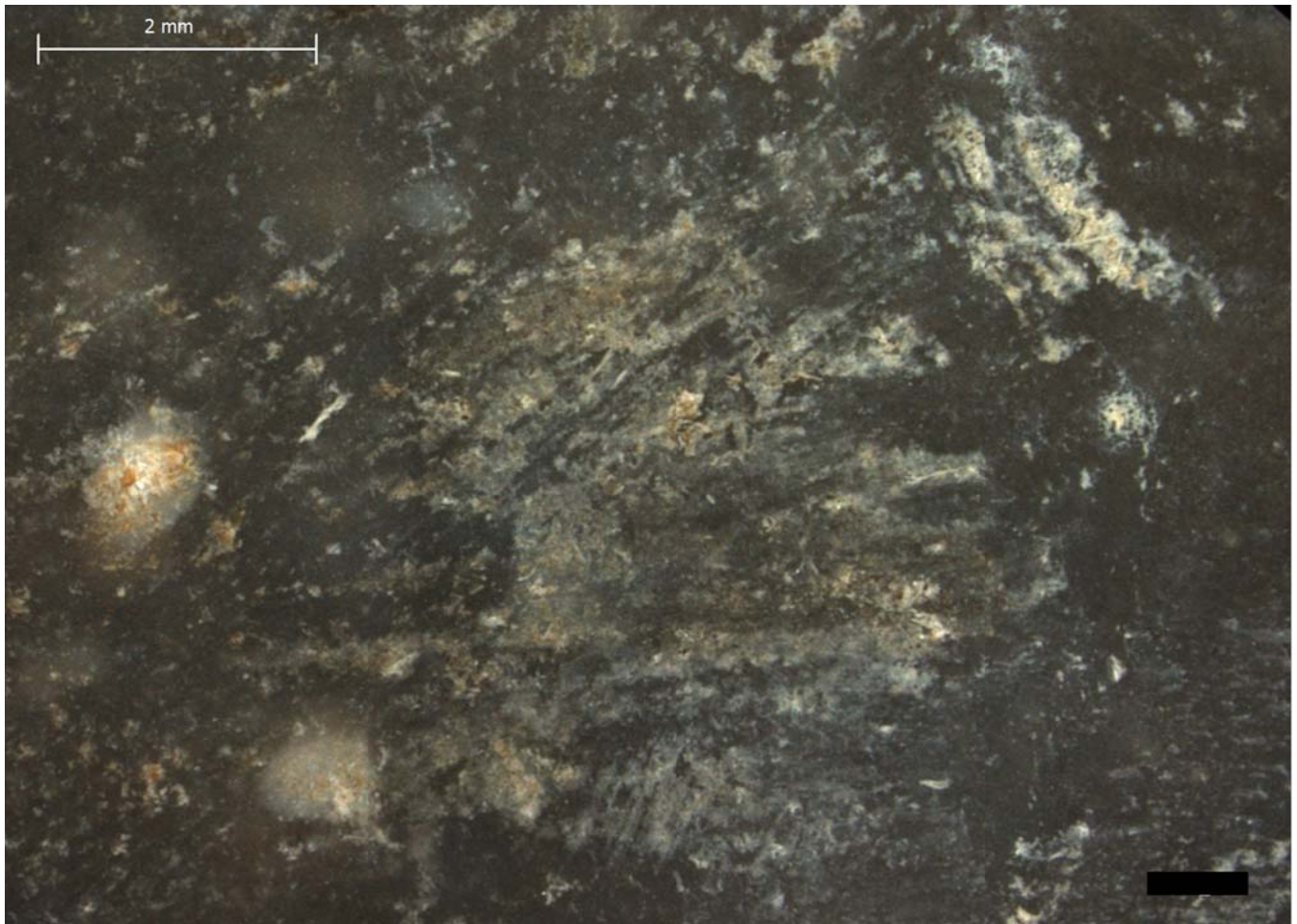


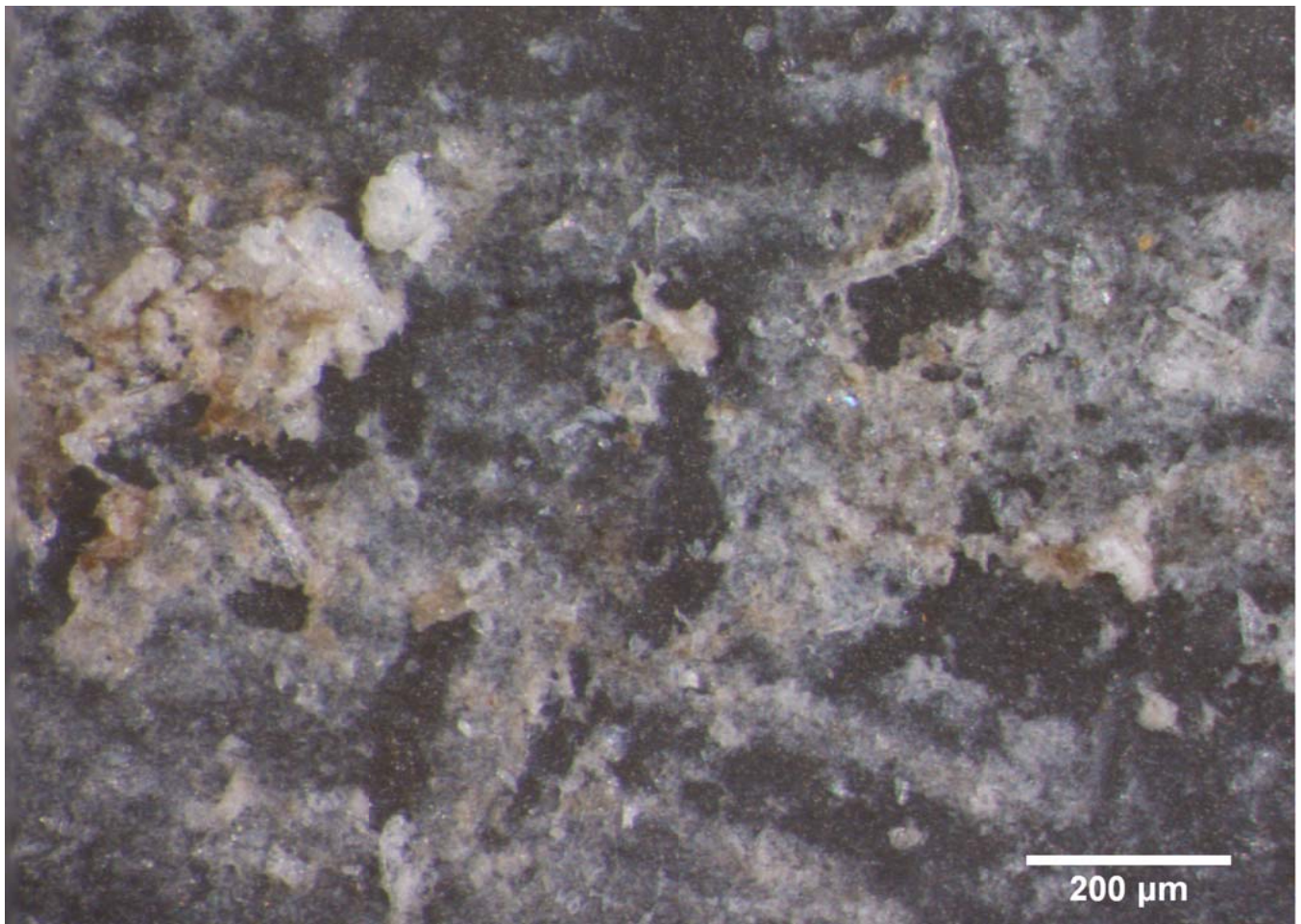
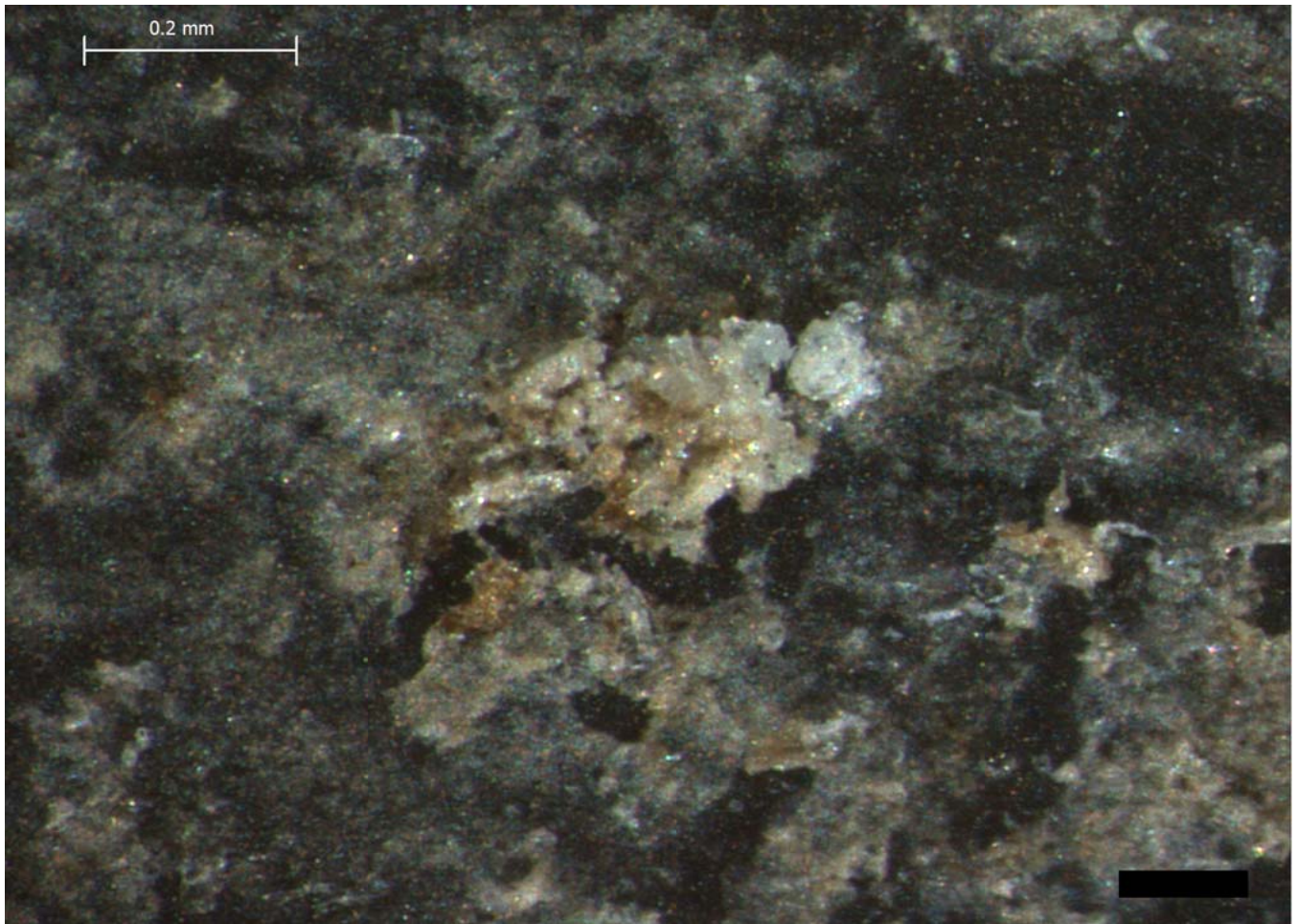




Blind Test 1

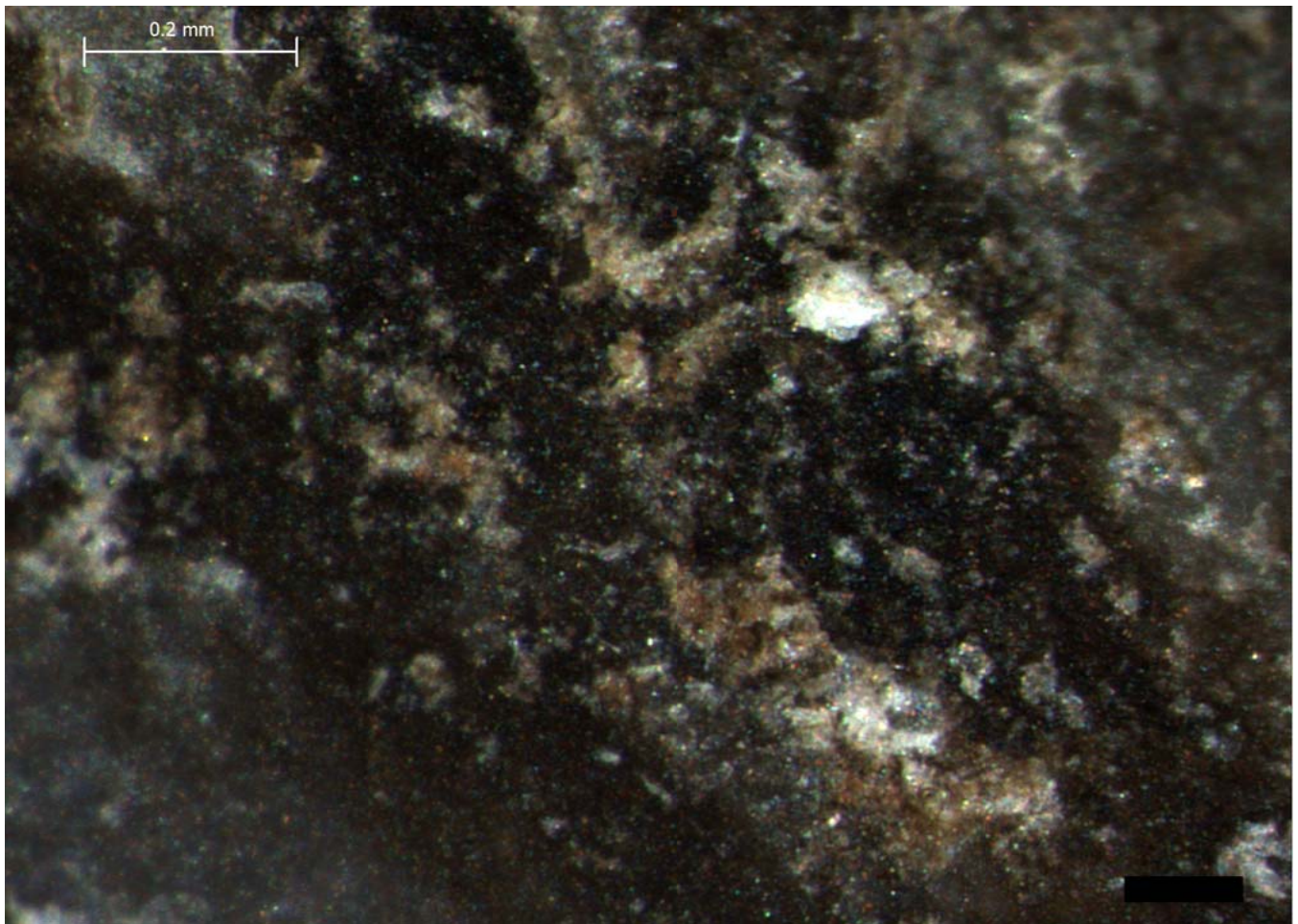
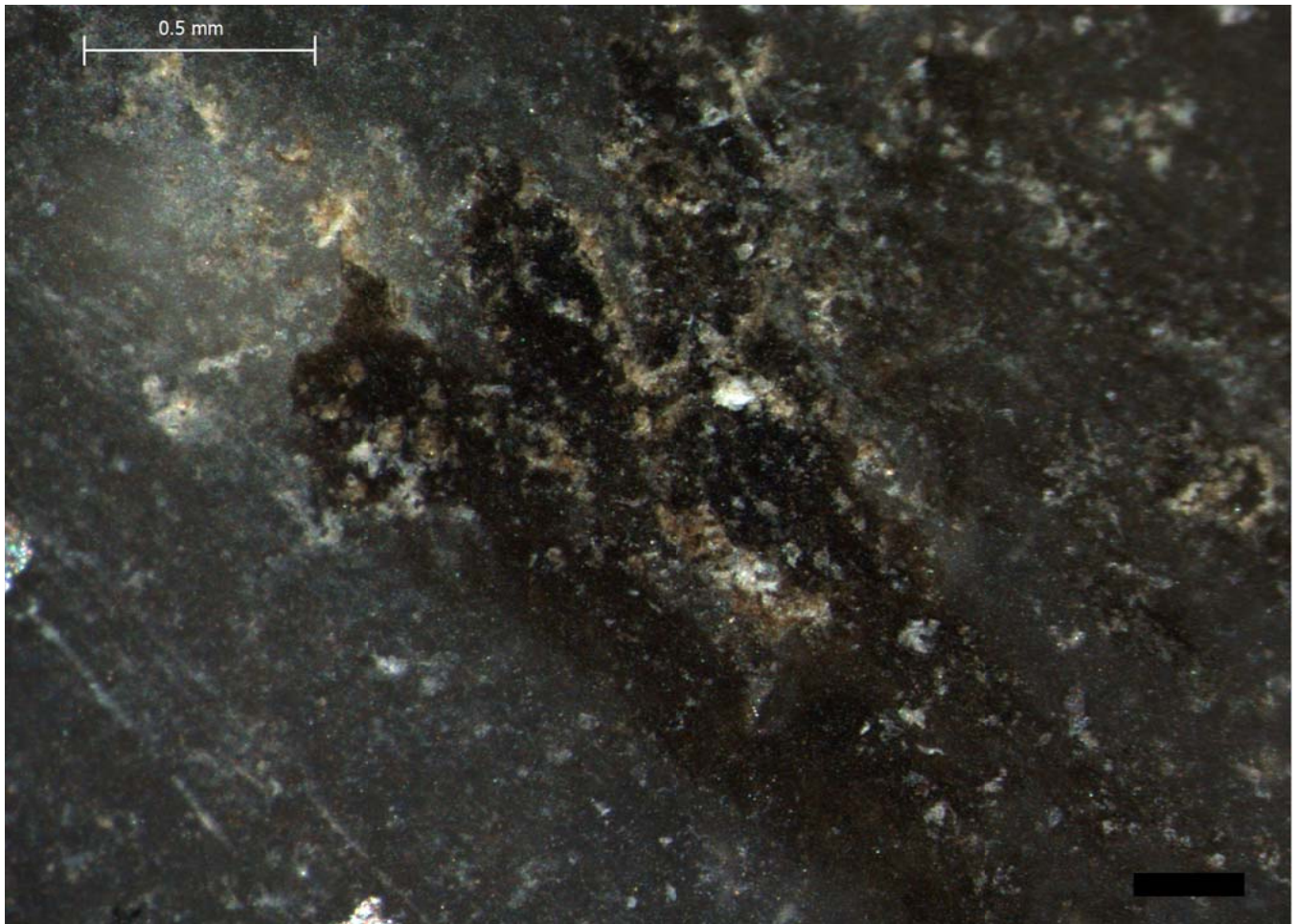
Residue 7Vb

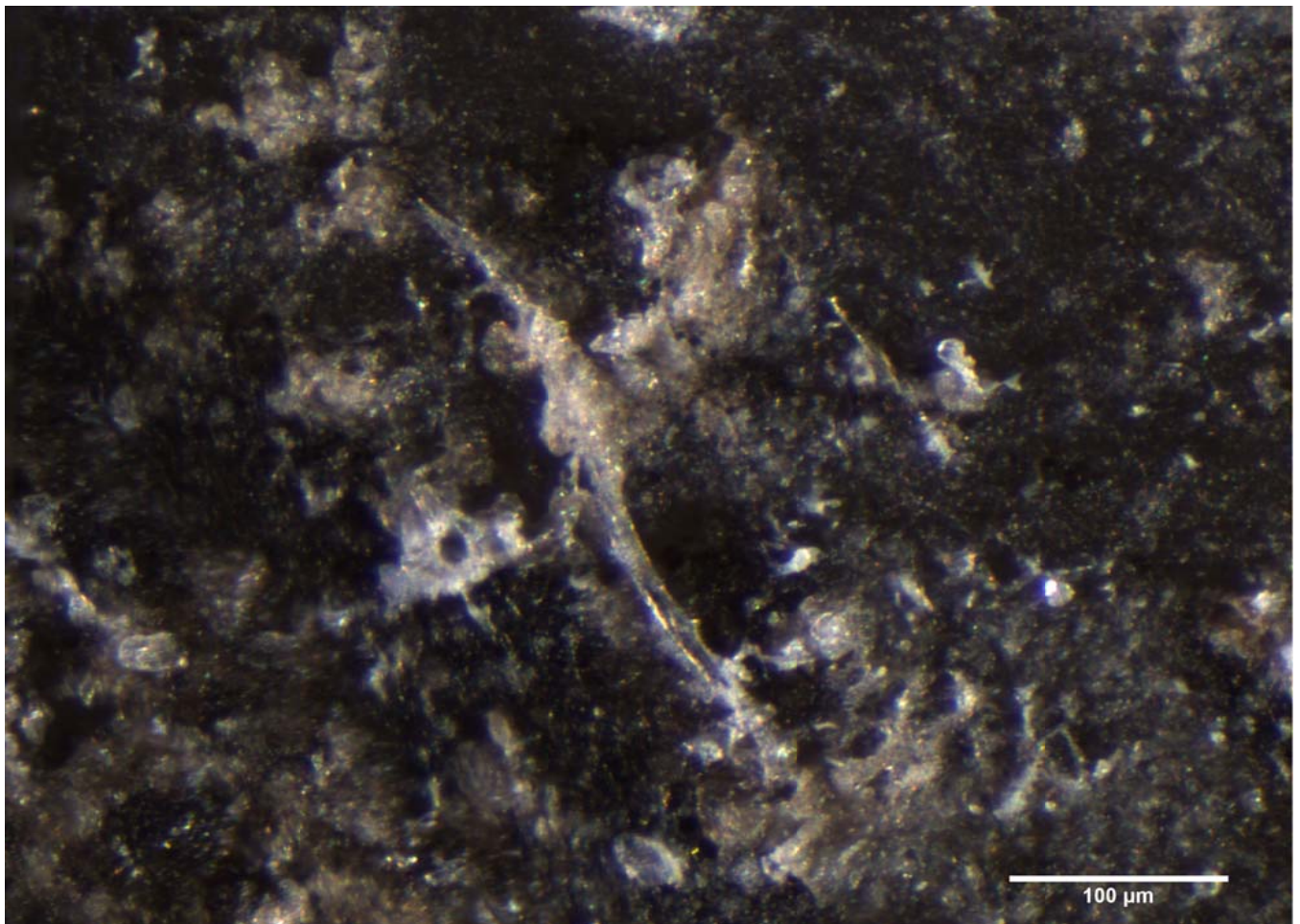
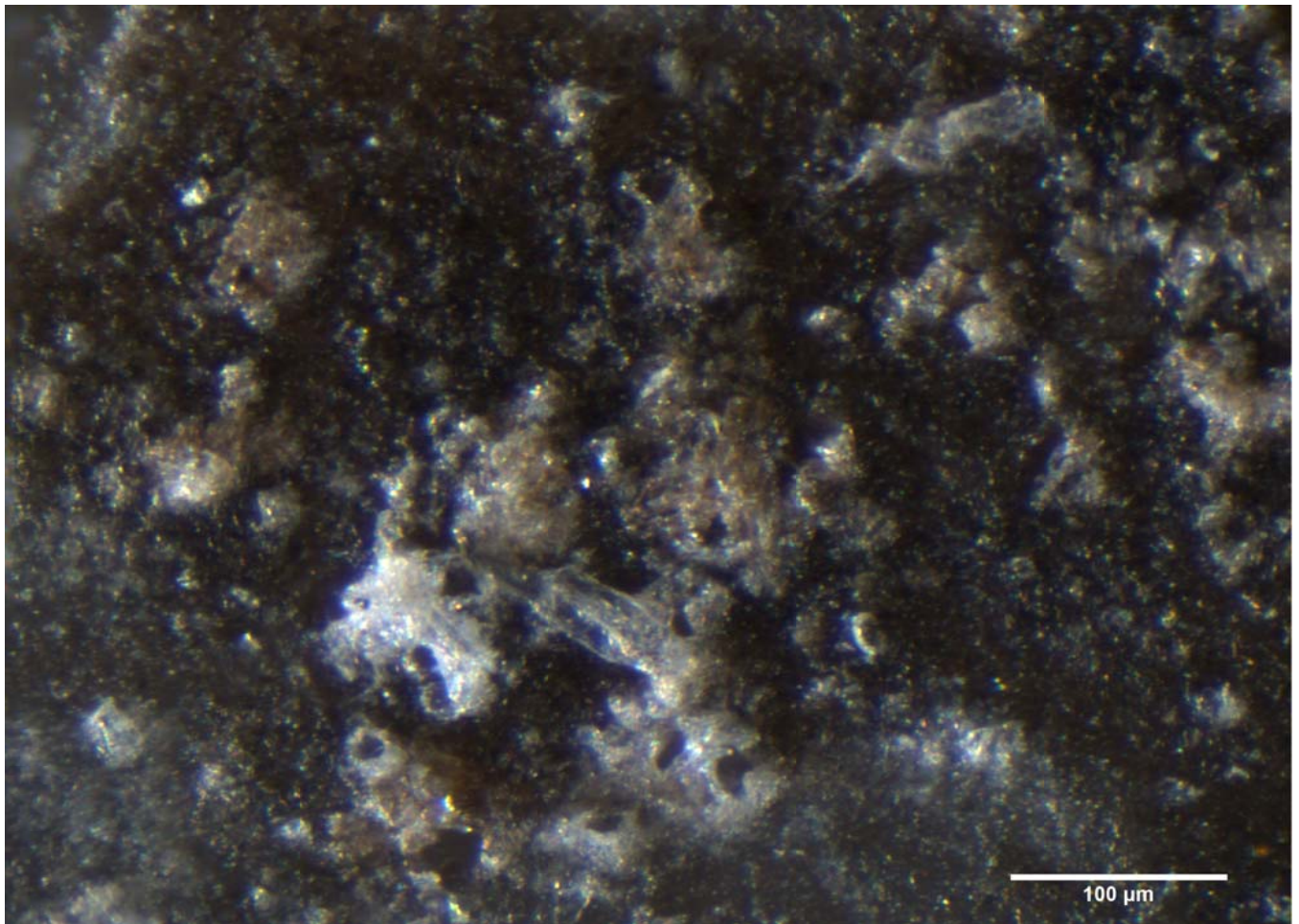


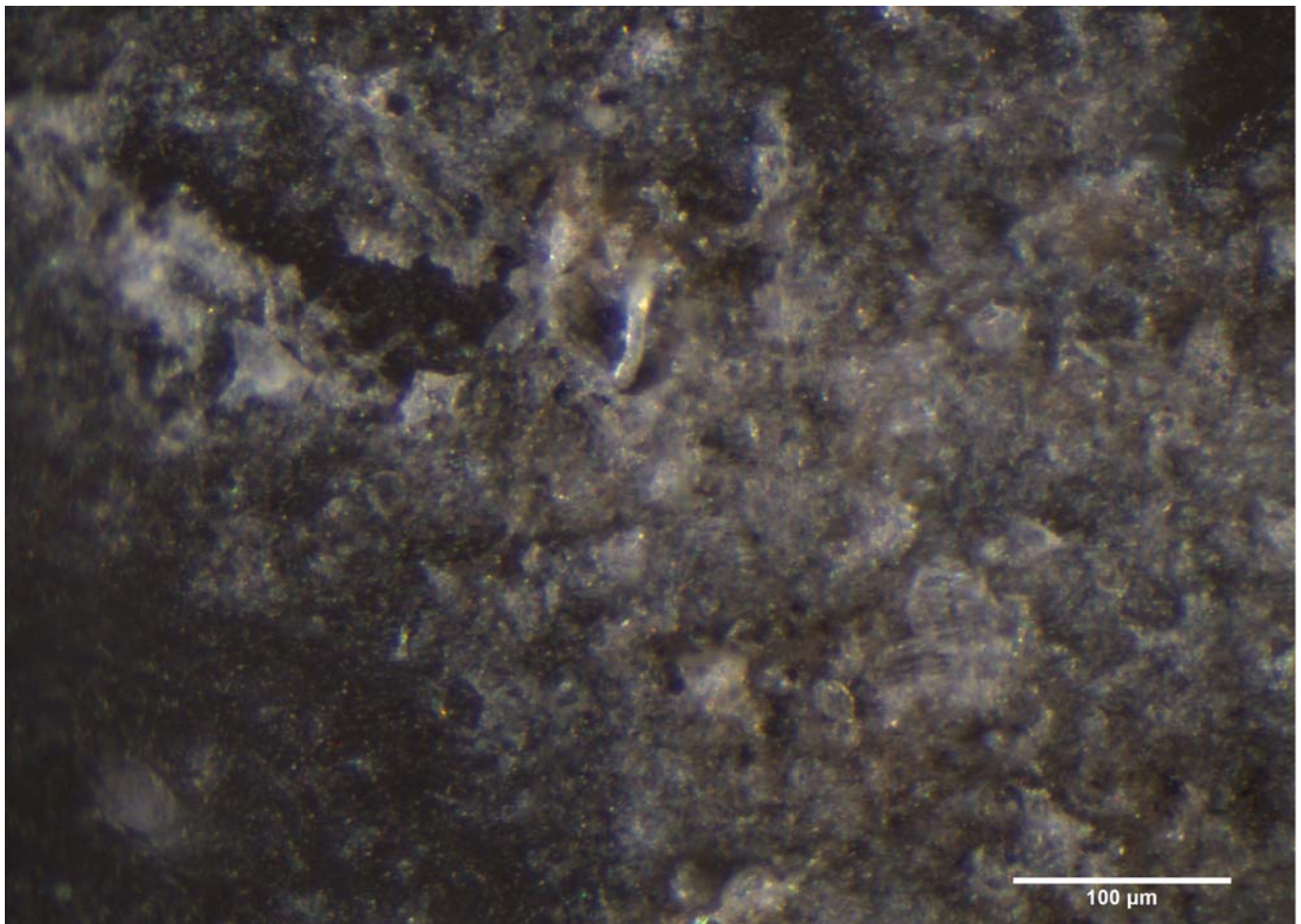
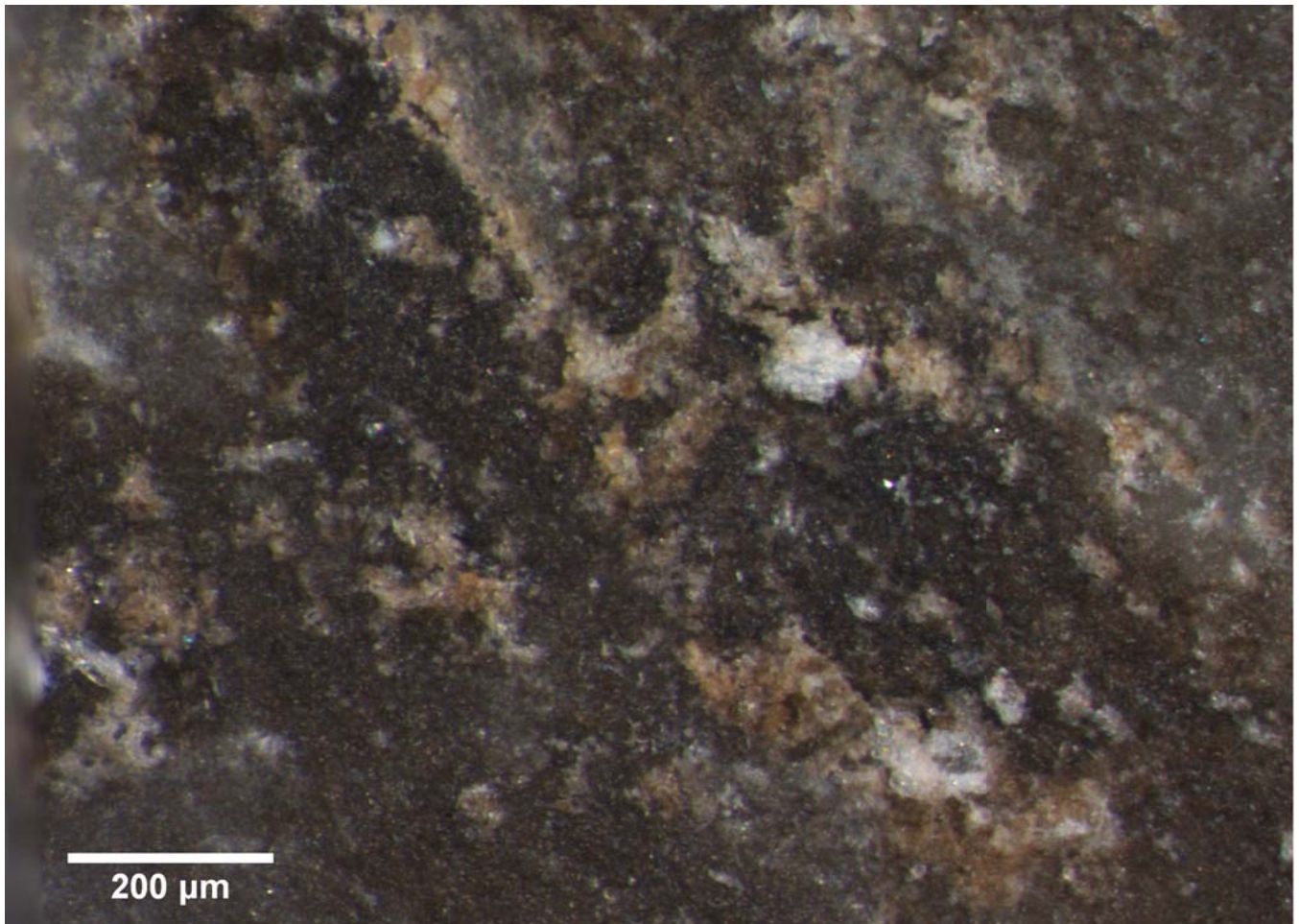


Blind Test 1

Residue 7Vc

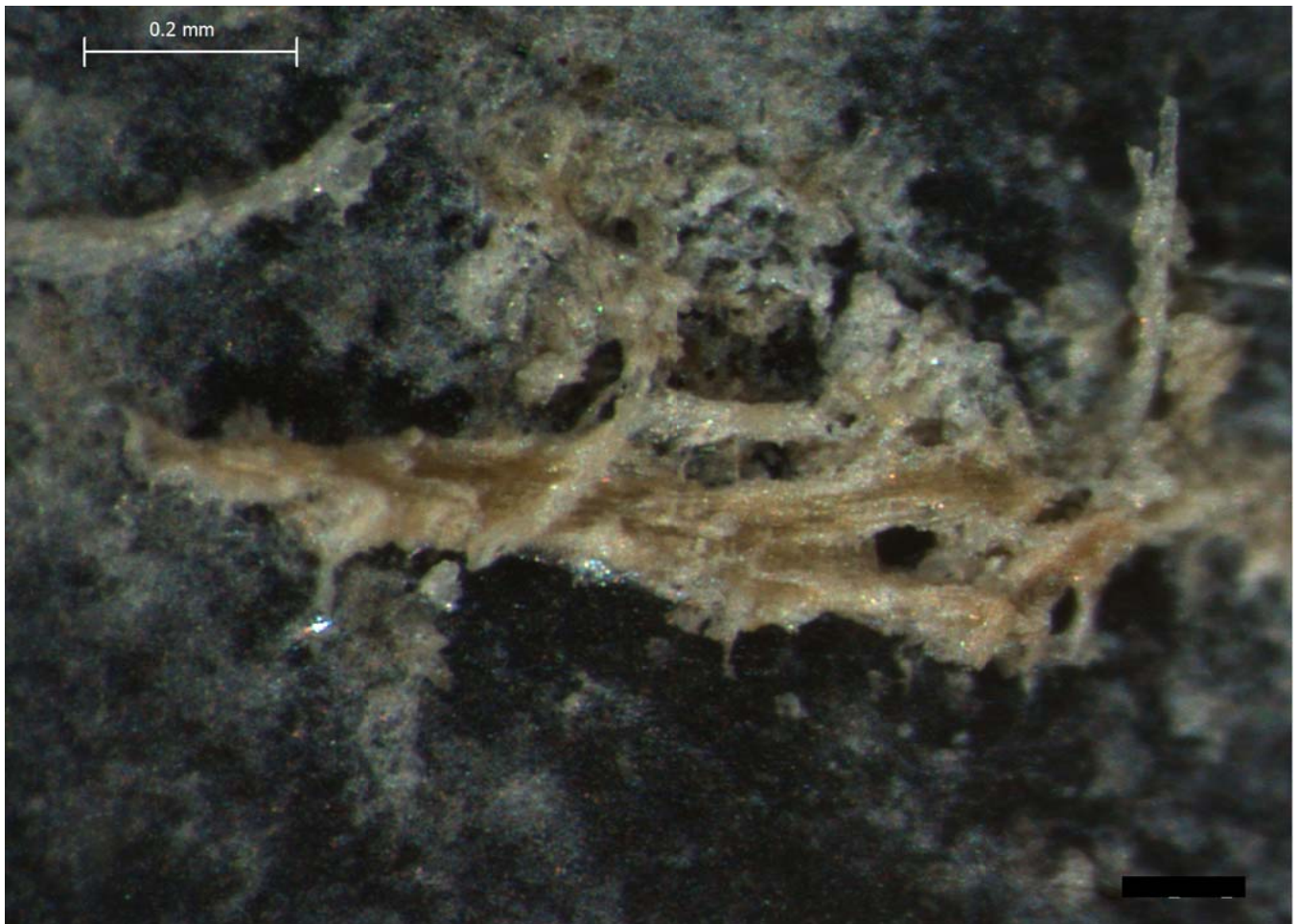
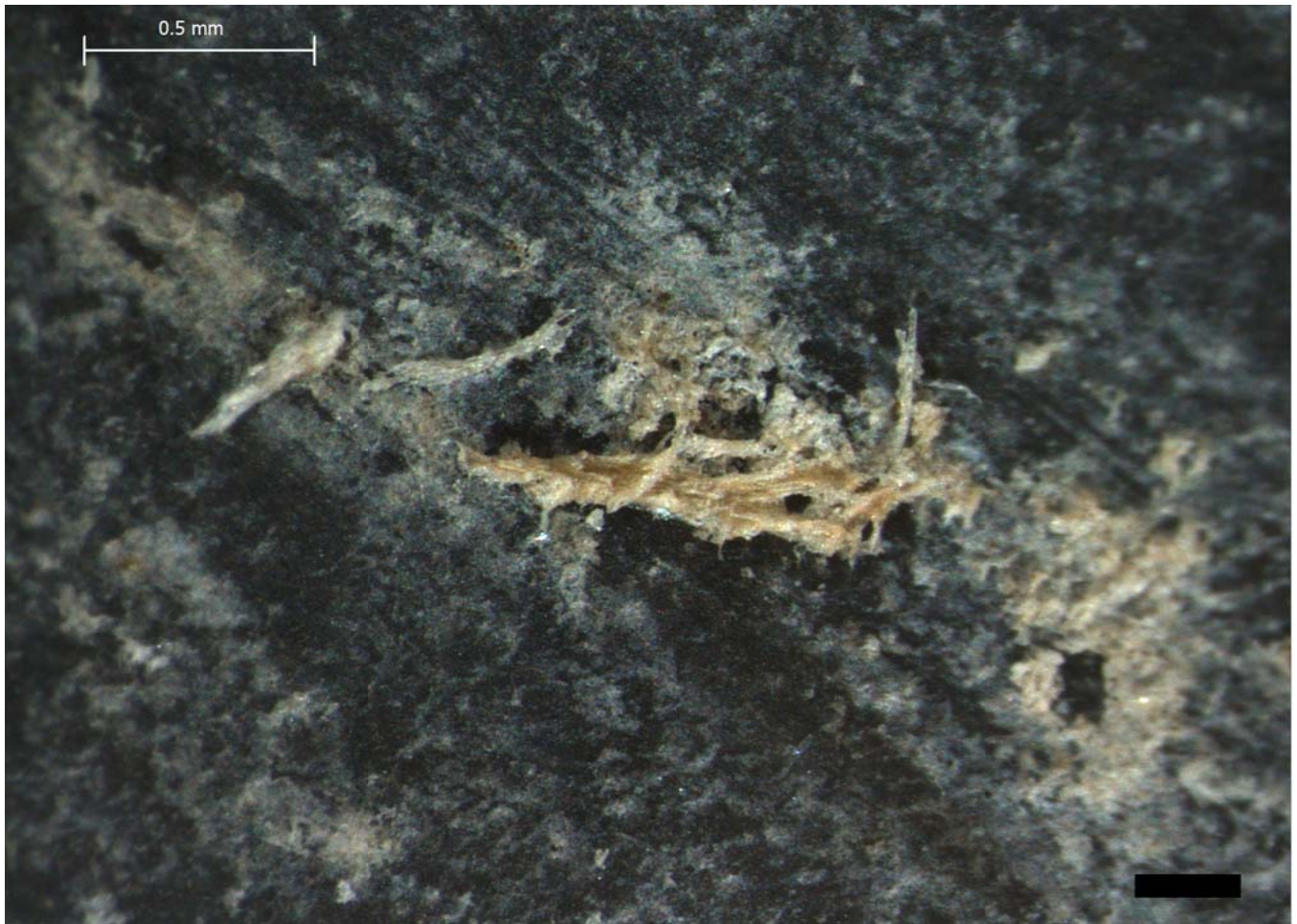


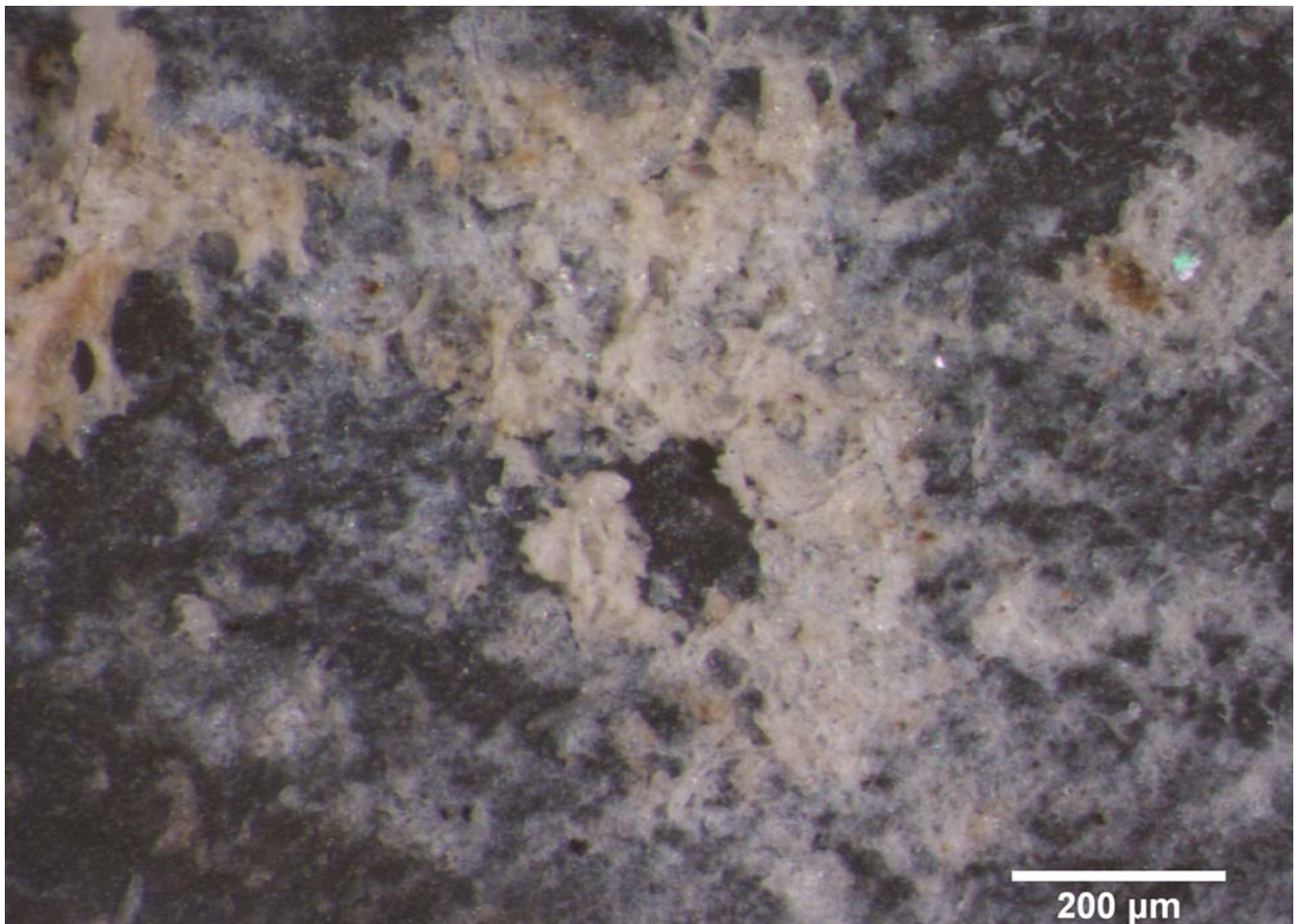
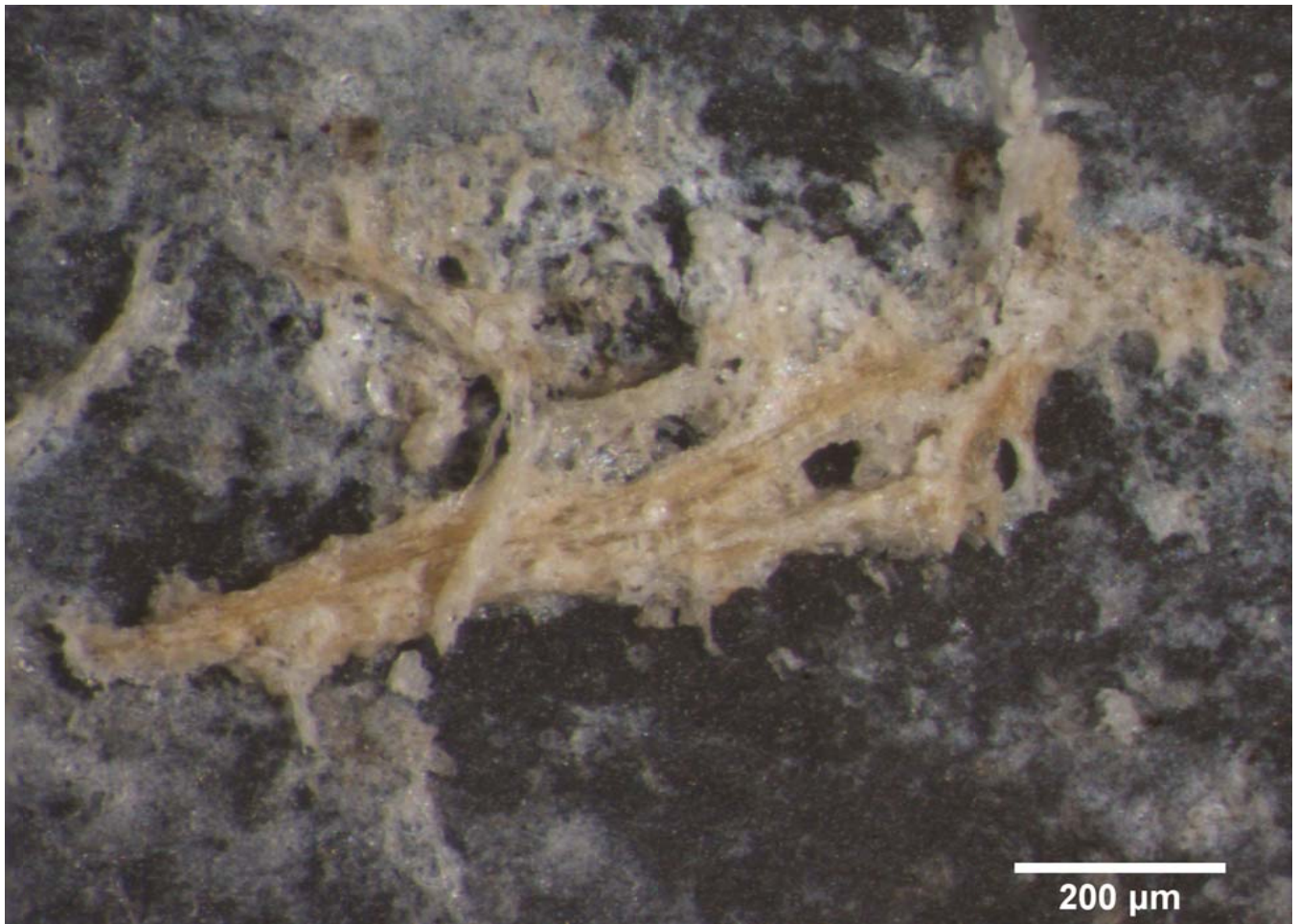




Blind Test 1

Residue 7Vd





Blind Test 1

Residue 7Ve

